



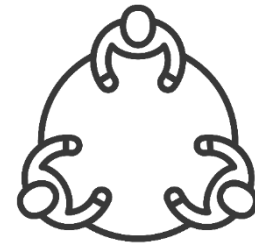
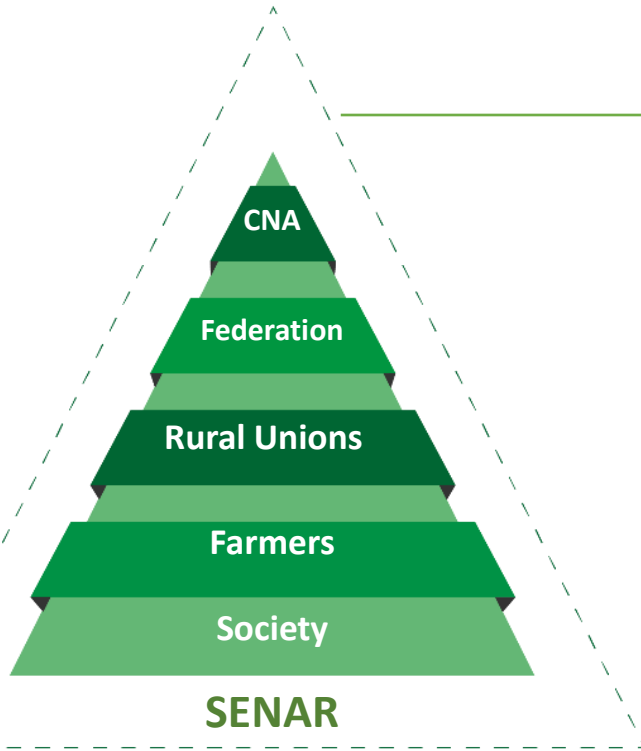
**FAMASUL**

Federation of Agriculture and Livestock  
Mato Grosso do Sul

# RURAL UNION SYSTEM

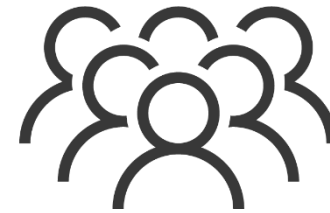
## MISSION

To promote the sustainable development of agribusiness, representing the interests of Mato Grosso do Sul farmers and strengthening the institutional relationships.



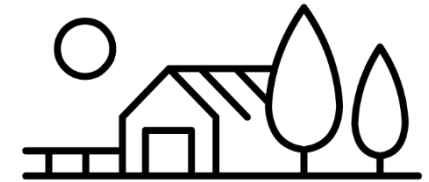
69

Rural Unions



19,058

Farmers



40,799

Rural Properties

**Rural Professional Formation (FPR)** – 252 courses

**Formal Education** - Centre of Excellence in Beef Cattle

**E-tec Net** – Agribusiness Technician

**Technical and Management Assistance** – 8.000 properties

**Social Promotion (PS)** – 30 courses

**Technical/Political representation** – 150 councils

**Research Support** – 5 units

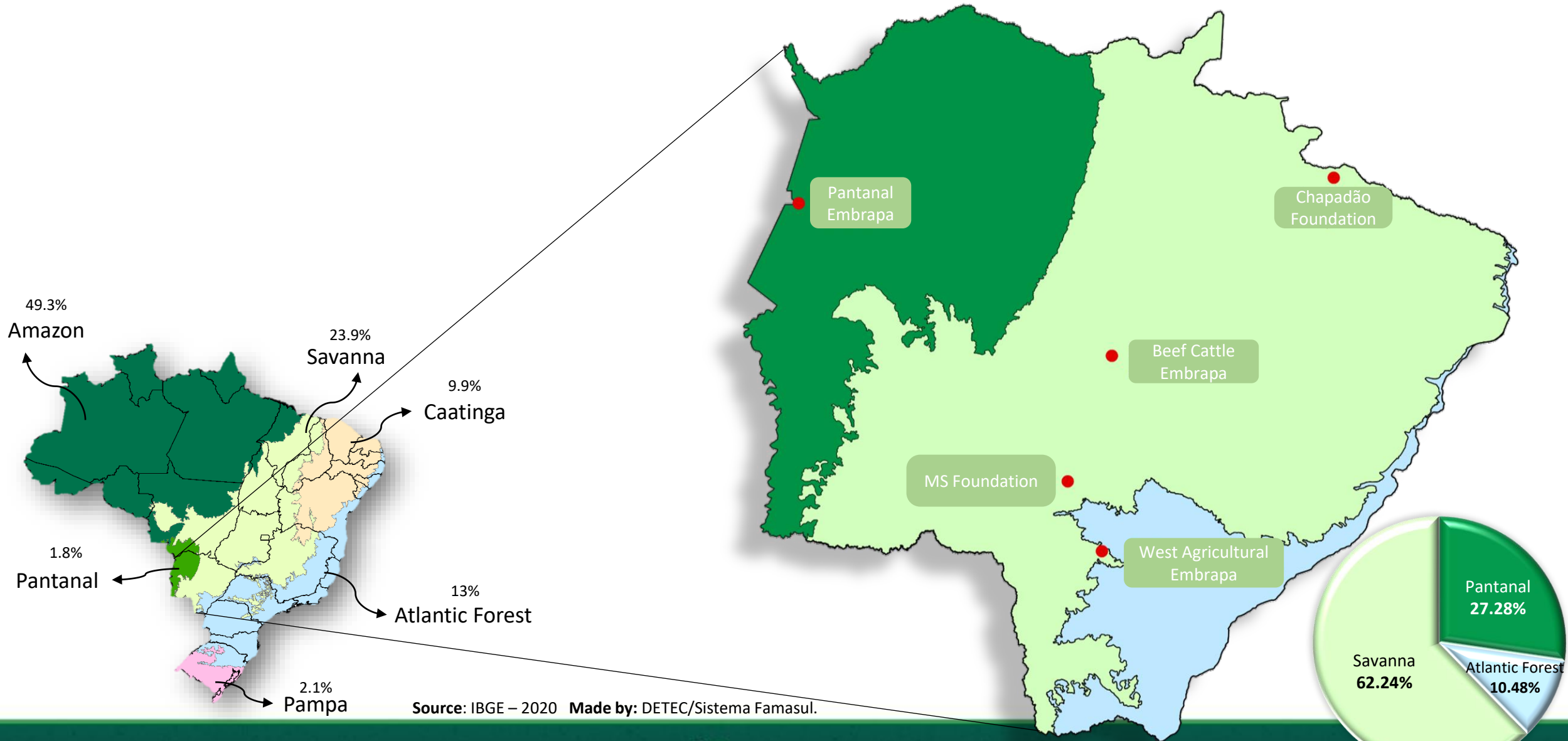
A collage of agricultural images including a combine harvester, a chicken, a pig, and a horse, all overlaid with a semi-transparent green filter. The collage is split horizontally by a white diagonal line that runs from the top-left to the bottom-right.

---

# **MATO GROSSO DO SUL AGRICULTURAL: OVERVIEW**

---

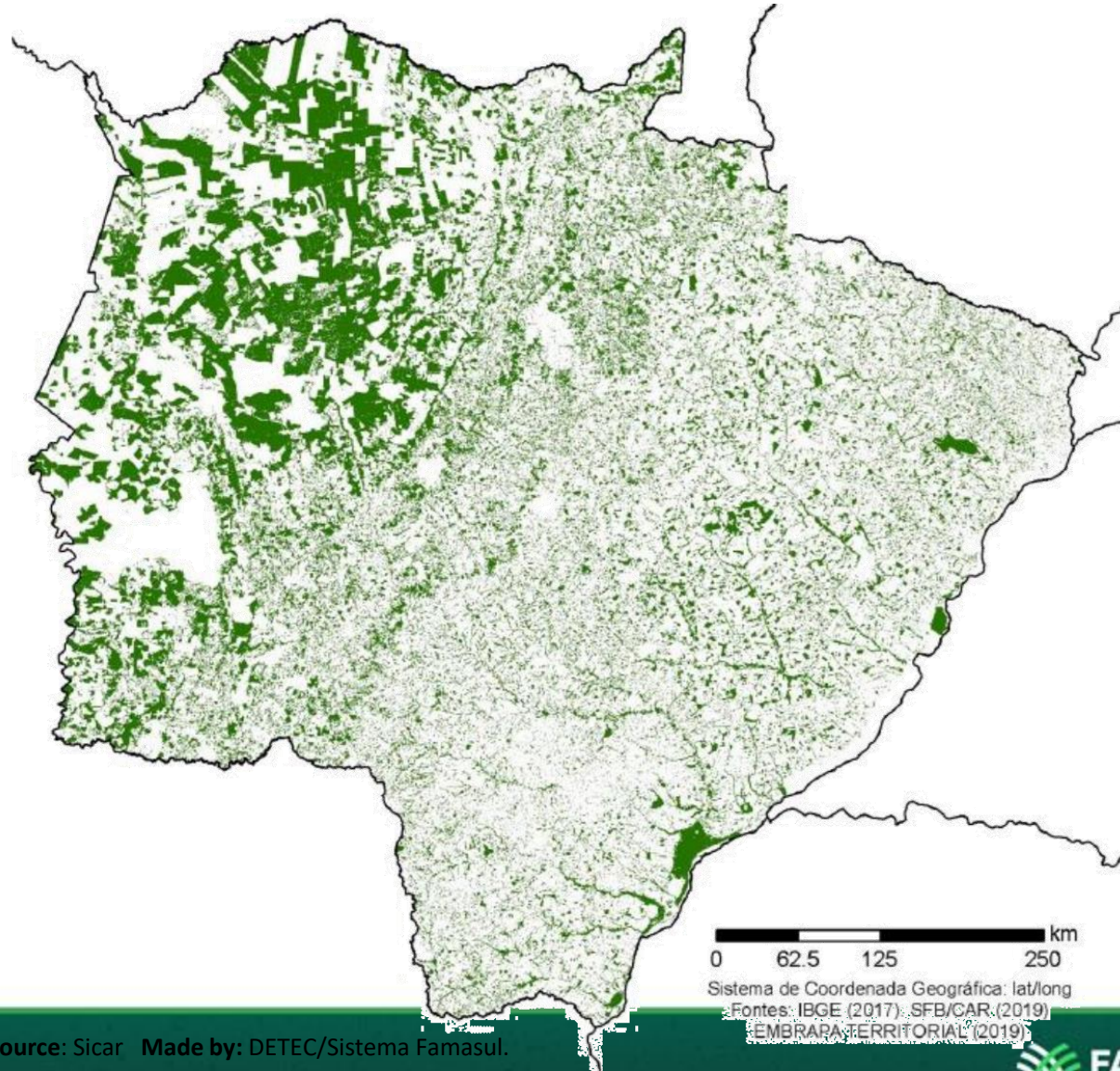
# BIOMES



Source: IBGE – 2020 Made by: DETEC/Sistema Famasul.

# PRESERVATION

Areas dedicated to the preservation of native vegetation inside the farms:



Law known as “forest code”:

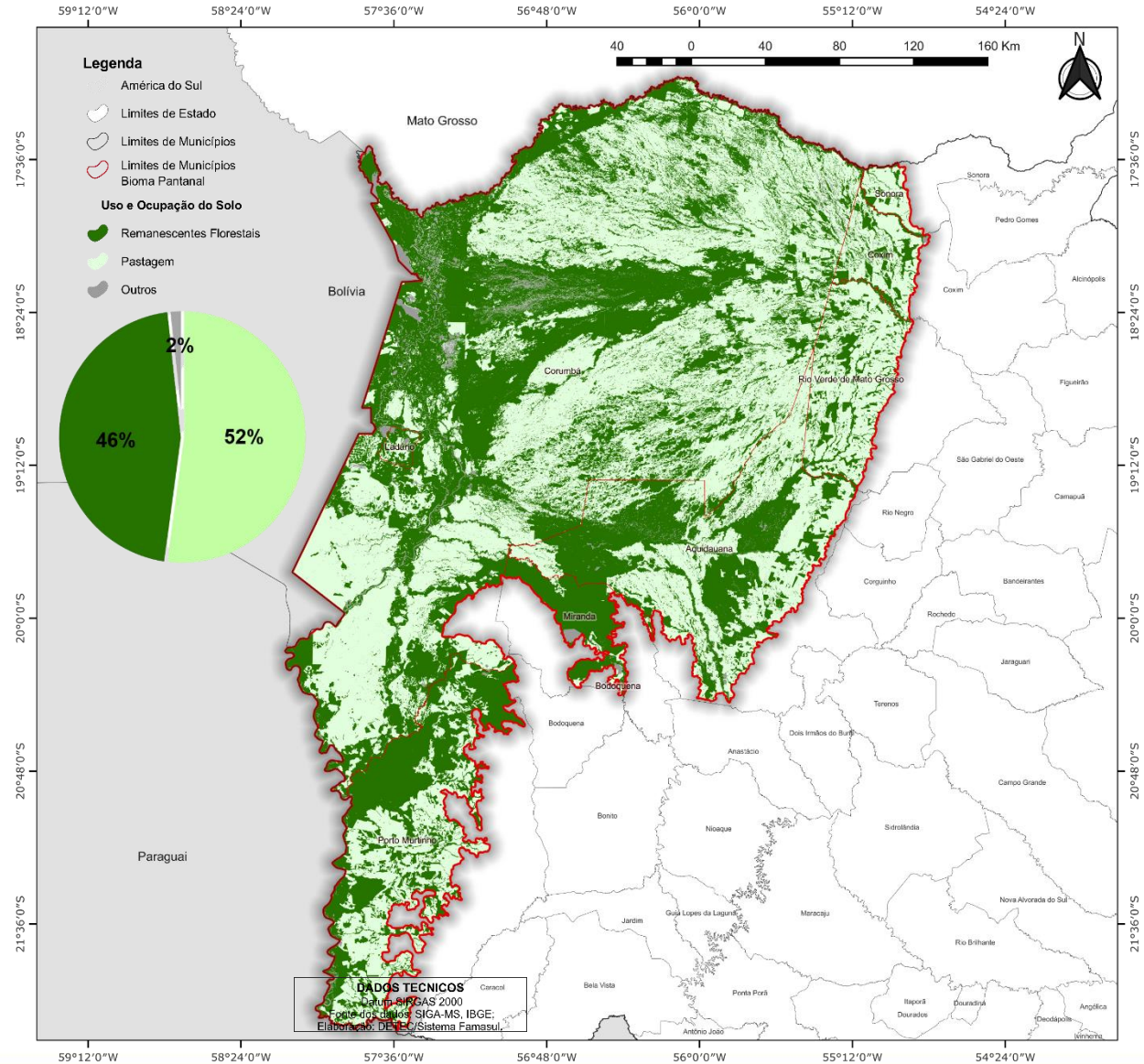
Protection of native areas on properties:

- Legal reserve: 20% of the property;
- +  
• Permanent Preservation Area (APP) - forests around water resources, springs, hilltops, etc.;

Great opportunity to trade carbon credits through carbon sequestration in these areas. There is still a lack of regulation.

\*this map excludes areas of public forest reserves, for example: indigenous lands, parks, national forests, among others.

# PRESERVATION



**87.5% of the biome  
is preserved**



**97% of the area is  
constituted by  
private properties**

Source: SICAR; IBGE

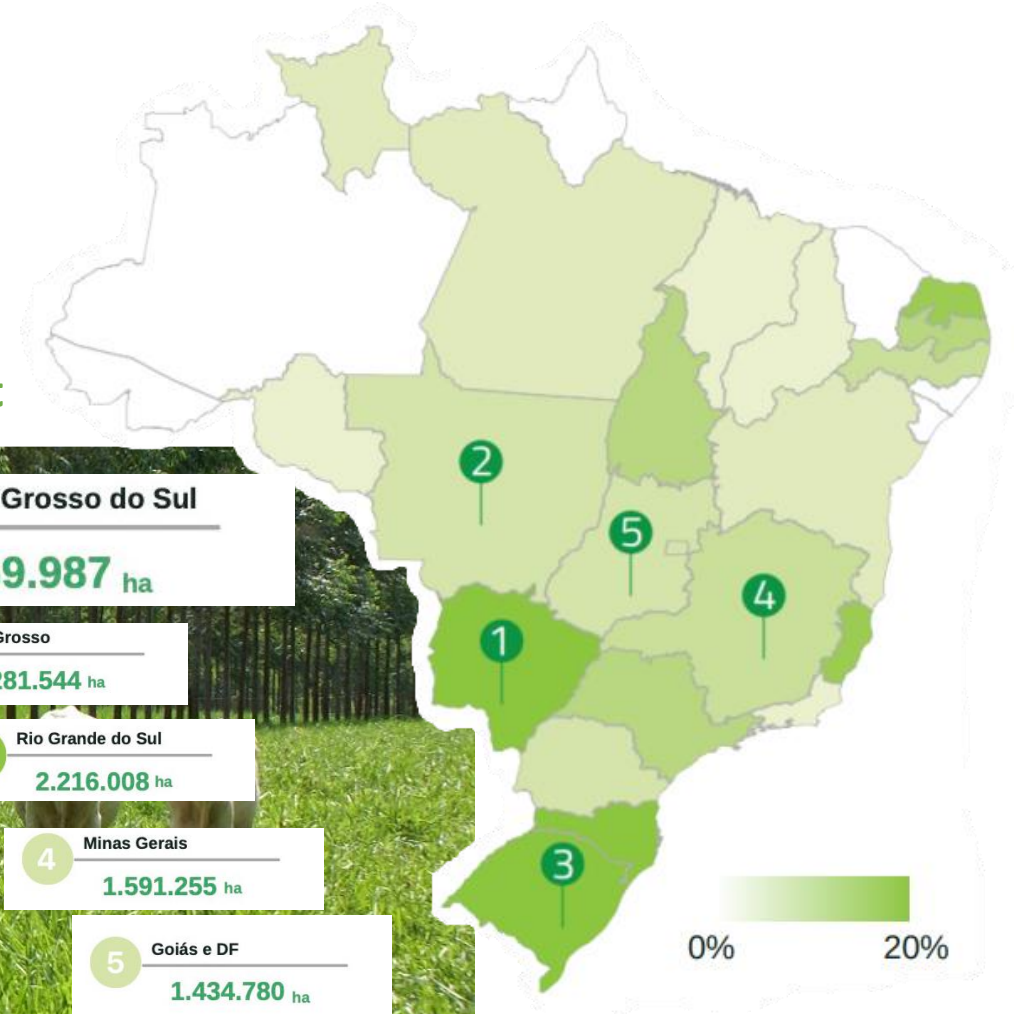
# INTEGRATED SYSTEMS

Mato Grosso do Sul has the largest area of

# INTEGRATED SYSTEMS

in Brazil

ILP/ILPF/ILF  
Agriculture – Livestock – Forest



\*Área total do Brasil: 851.577.000 ha

Source: Rede ILPF, 2020; 2021.



## MAKE MATO GROSSO DO SUL A CARBON NEUTRAL STATE BY 2030

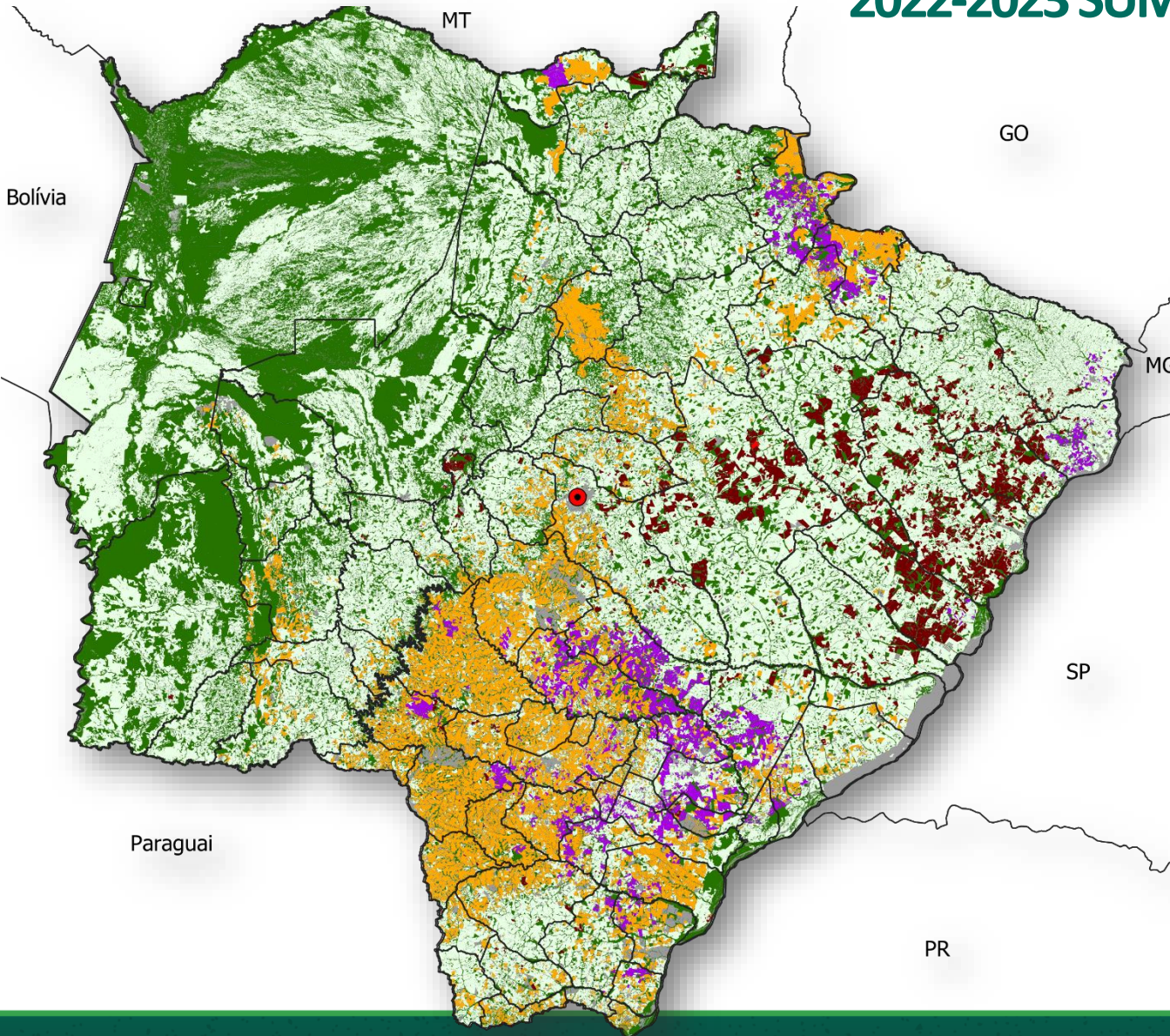
Commitment presented and assumed in November 2021 at COP 26 by SEMAGRO's secretary Jaime Verruck.





# MATO GROSSO DO SUL LAND USE AND OCCUPATION

## 2022-2023 SUMMER CROP



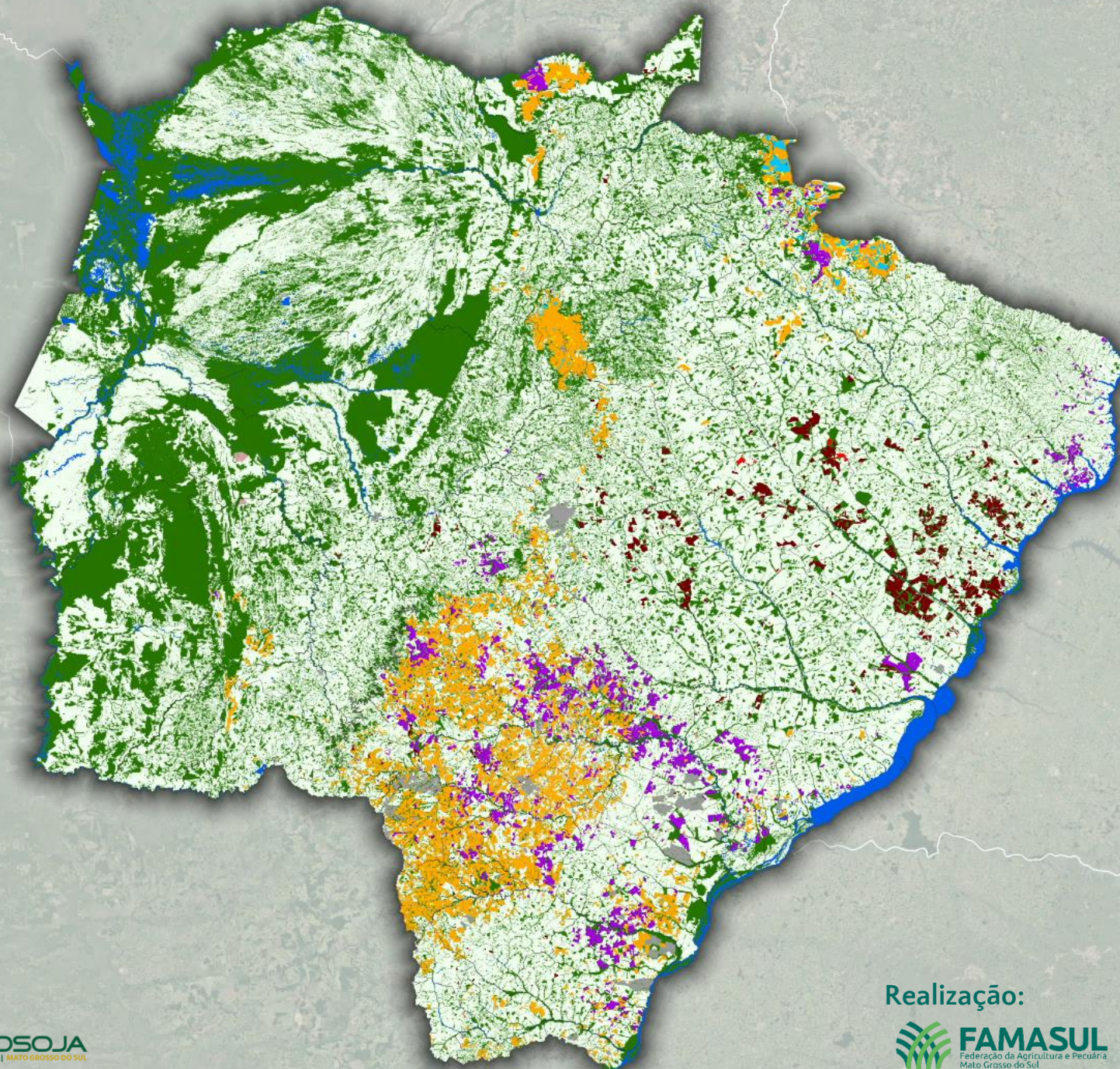
Legend	Culture	Area	Participation
	Soybean	4,005,399	11.2%
	Corn	19,994	0.10%
	Sugarcane	832,348	2.3%
	Eucalyptus	1,280,674	3.60%
	Pinus	5,824	0.00%
	Rubber Tree	19,415	0.10%
	Pasture	17,602,398	49.30%
	Remaining forests	10,825,185	30.30%
	Others	1,123,240	3.10%
<b>Total</b>		<b>35,714,477</b>	<b>100%</b>

Campo Grande

Achievement:



1ª SAFRA 2011-12



Realização:

SIGAMS



PRODUTIVIDADE



APROSOJA  
SISTEMA FAMASUL | MATO GROSSO DO SUL

Realização:

FAMASUL  
Federação da Agricultura e Pecuária  
Mato Grosso do Sul

FUNDEMS

SEMADESC  
Secretaria de Estado  
de Meio Ambiente,  
Desenvolvimento, Ciência,  
Tecnologia e Inovação










## AGRICULTURAL AND PLANTED FORESTS AREA EXPANSION

	2010	2023	
<b>Pasture</b>	21,819,309	17,602,398	4,216,911 ▼
<b>Remaining Forests</b>	10,580,850	10,825,185	244,335 ▲
<b>Grains</b>	1,813,375	4,025,393	2,212,018 ▲
<b>Planted Forests</b>	341,350	1,305,913	964,563 ▲
<b>Sugarcane</b>	592,950	832,348	239,398 ▲
<b>Other cultures</b>	566,577	1,123,240	556,663 ▲
<b>MS Total Area</b>	35,714,411	35,714,411	

Data in hectares | *Source: SIGA-MS, 2023.*

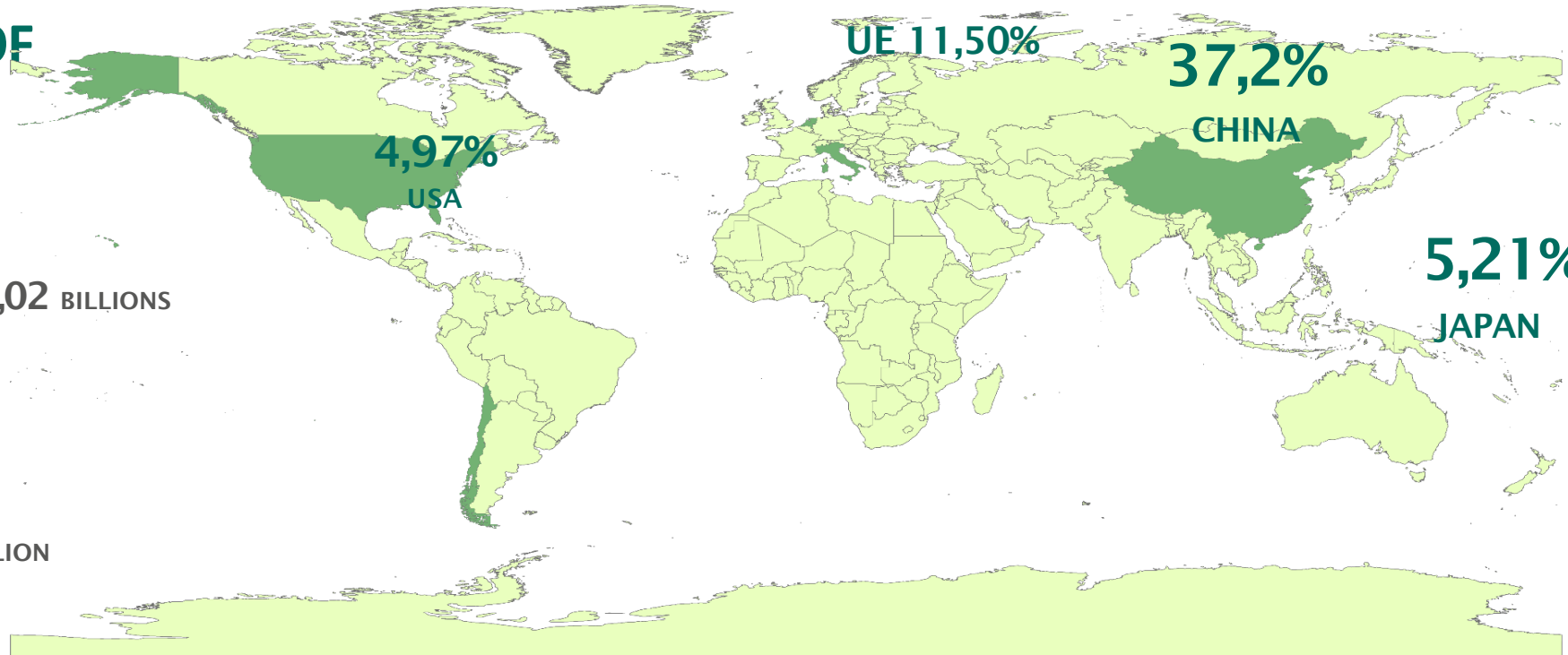
# MATO GROSSO DO SUL IN THE NATIONAL RANKING

	PRODUCTION	EXPORT
 CATTLE MEAT	3rd	5th
 SOY BEANS	5th	8th
 CORN	4th	2th
 FORESTS PRODUCTS	2nd	1st
 SUGAR CANE	4th	5th
 PORK MEAT	7th	5th
 CHICKEN MEAT	8th	6th

Source: IBGE; MDIC; MAPA; CONAB, 2023.  
 Made by: DETEC/Sistema Famasul.

(\*) To account for Exports, Forest Products are composed of Natural Rubbers and Gums, Cellulose, Wood and Paper;  
 In production, the ranking and participation was established considering the Planted Forest – Eucalyptus area.

# 10 MAIN DESTINATIONS OF AGRIBUSINESS IN MS



## SOY COMPLEX

2022 U\$ 3,02 BILLIONS

## FOREST PRODUCTS

2022 U\$ 1,57 BILLION

## MEATS

2022 U\$ 1,57 BILLION

## CEREALS, FLOURS AND PREPARATIONS

2022 U\$ 969 MILLIONS

Other destinations in the ranking:



IRÃ



ARGENTINA



INDIA



CORÉIA DO SUL



ITÁLIA



CHILE

Fonte: MDIC, 2023; MAPA, 2023. Elaboração: DETEC/Sistema Famasul.

# BIOCEAN ROUTE

It is a 2,250 km road axis, which connects Campo Grande to the ports of northern Chile, bringing several competitive advantages to the state, including:

- Flow of various products;
- Receipt of fertilizers;
- Tourist, educational and cultural exchange;

**The Route shortens approximately 14 days of travel compared to traditional routes via the Panama Canal or Strait of Magellan.**



*It will be made possible after the completion of the bridge between Porto Murтинho and Carmelo Peralta – Forecast: November 2024.*

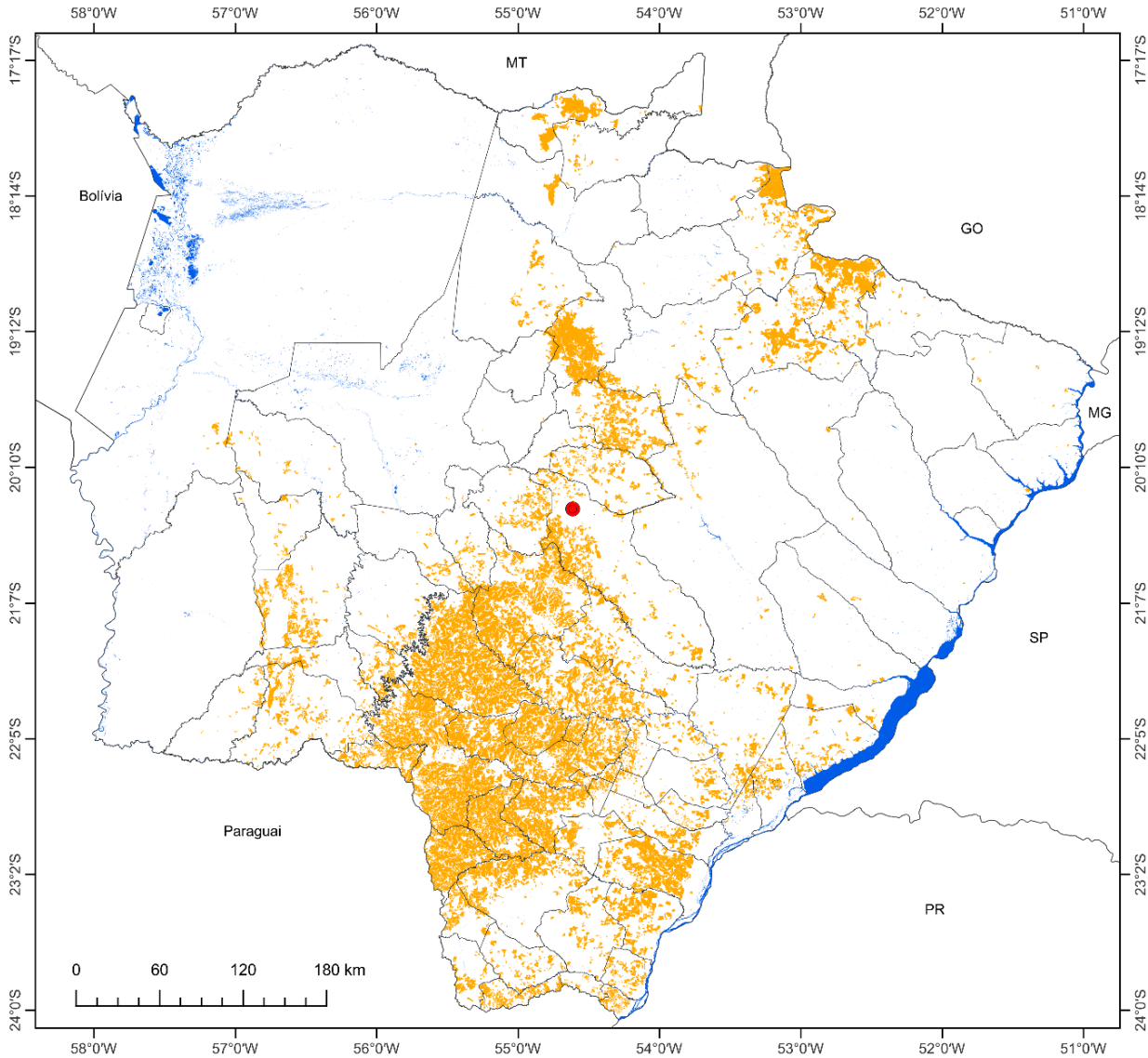
A collage of agricultural scenes in shades of green, including a person working in a field, a chicken, and a horse. The collage is partially obscured by a white diagonal shape.

---


# **MATO GROSSO DO SUL AGRICULTURE PRODUCTION**

---

# MS SOY BEANS AREAS 2022/23 HARVEST



## Soy beans

 4,005,399 ha

 Campo Grande

A growth of 7%.



Achievement:



Source: SIGA MS. Made by: DETEC/Famasul System.



# SOY BEANS MS – 2022/2023



Planted Area:  
3,748 million ha  
2021/22 harvest

20/21 Harvest  
Area 3,776 million ha  
Production 12,1 million t.

Productivity  
38.65 sc/ha  
Prod. 8,69 million t.

2022/23 Harvest  
Area 4,005 million ha  
Prod.: 15.005 million t.\*

Export  
soy complex  
4.9 million t.



Soybeans in grain  
3.5 million t. - 72%

**20 countries**  
China: **78.35%**  
Argentina: **7.60%**  
South Korea: **3.63%**  
Vietnam: **2.42%**

Soybean meal  
1,17 Millions t. – 24%

**27 countries**  
Netherlands: **22.60%**  
Indonesia: **19.17%**  
Thailand: **12,8%**  
Japão: **9,4%**  
Others: **36%**

Soybean oil **199**  
thousand t. – 4%

**11 countries**  
India: **70.6%**  
Iran: **11.9%**  
Bangladesh: **8.2%**  
China: **6.4%**



Source: SIGA/MS, SECEX, 2023. Made by: DETEC/Sistema Famasul.

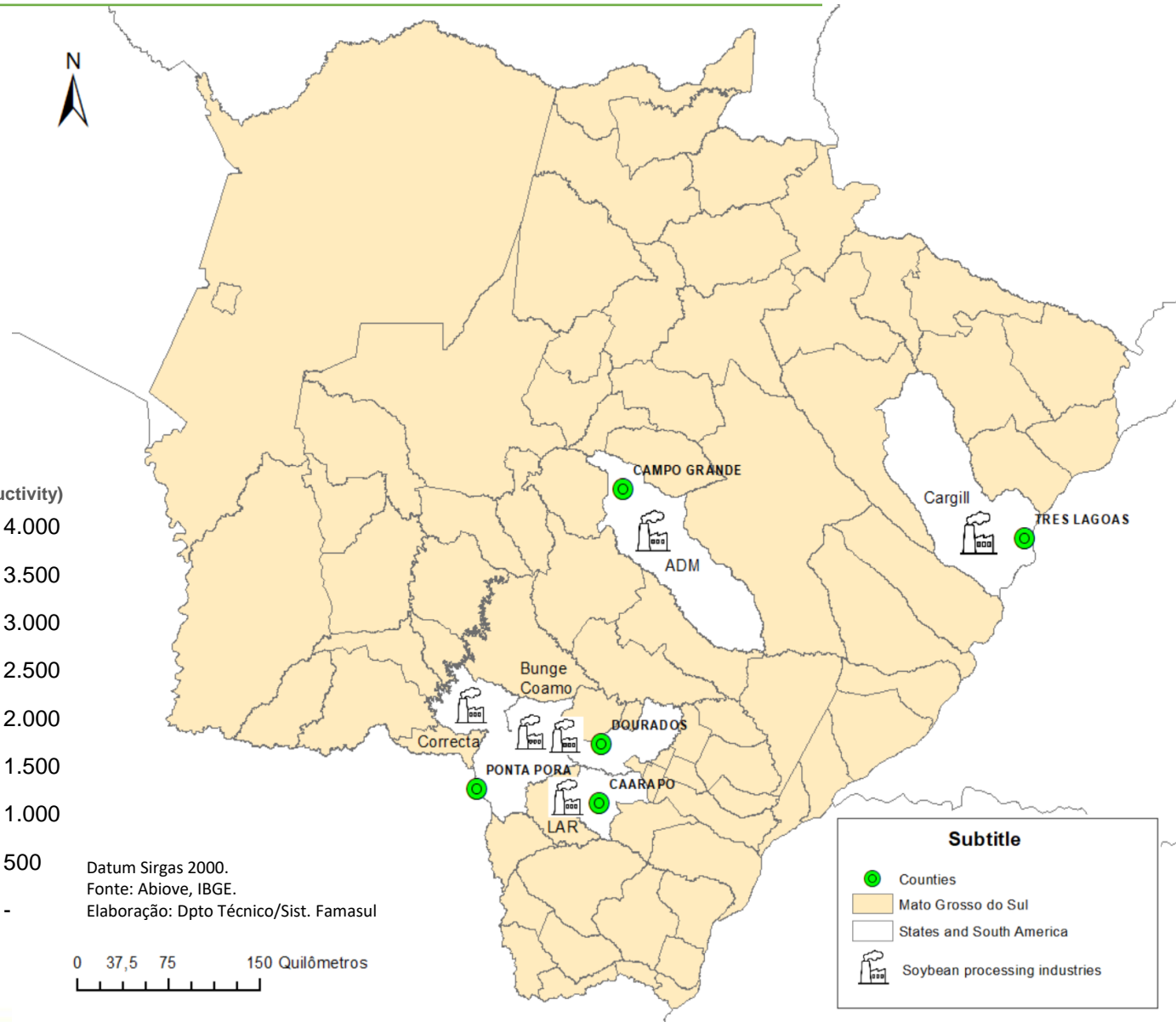
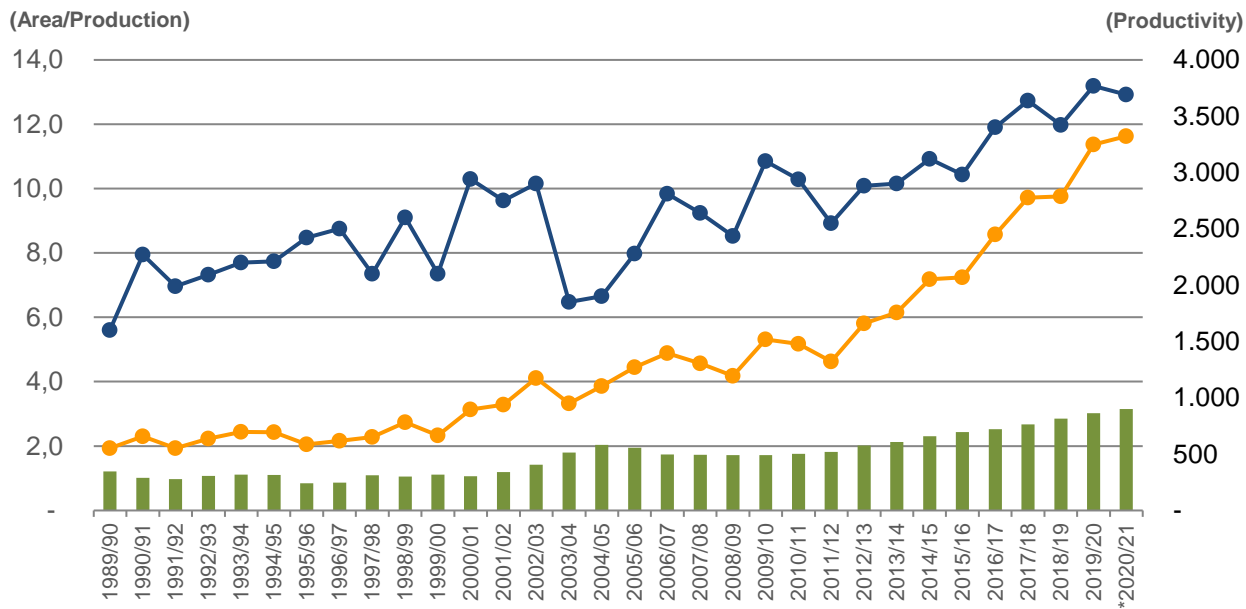
# SOYBEAN PROCESSING INDUSTRIES

Harvests 1992/93 to 2022/23:

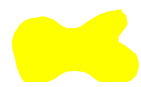
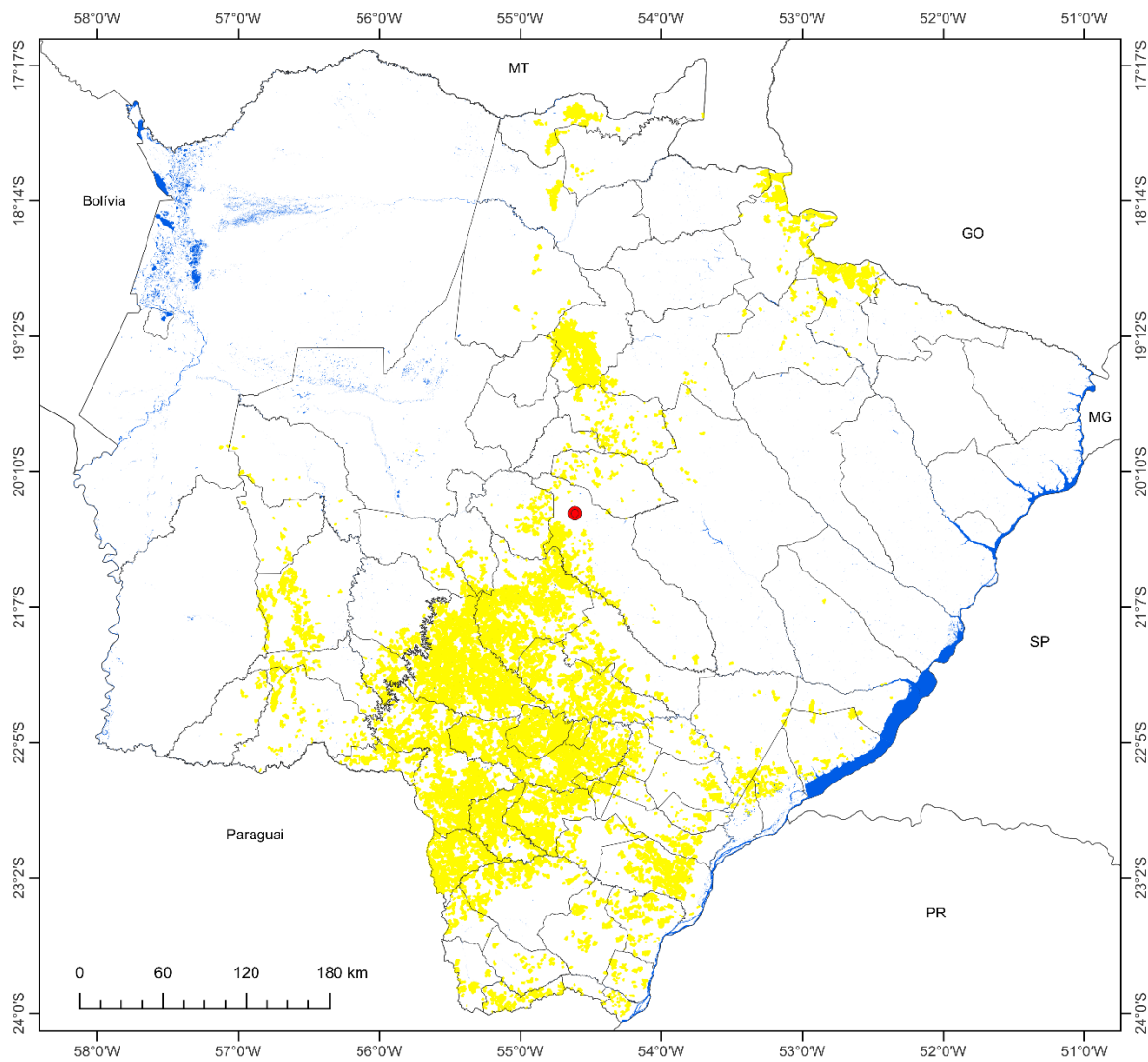
↑ 252.6% Area

↑ 504.8% Production

↑ 71.5% Productivity



# MS CORN AREAS DISTRIBUTION - WINTER CROP HARVEST 2021/2022



**Corn**

2,205,730 ha



Campo Grande

Source: SIGA MS. Made by: DETEC/Famasul System.



**20/21 Harvest**  
Area **2,280 million ha**  
Production **6,52 million t.**

Planted Area:  
2,206 million ha  
2021/22 CROP

Productivity **96,53 sc/ha**  
Production  
**12,775 ton.**

2022/23\* Crop Estimate  
Area **2,3 million ha**  
Production **11,206 million t**



Export  
25,98%

Corn  
3,3 million ton.  
\$957.7 million

**13 Countries**  
Japan: **29,87%**  
Iran: **26,34%**  
South Korea: **7,40%**

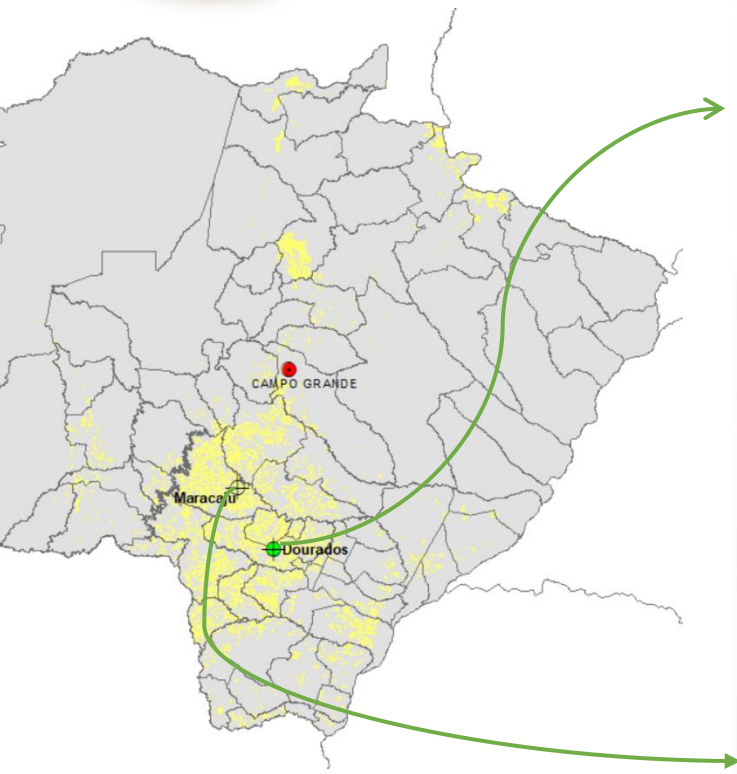
## CORN MS - 2022

Source: SIGA/MS; MAPA, 2023. Made by: DETEC/Sistema Famasul. \*Forecast



# CORN ETHANOL IN MATO GROSSO DO SUL

2nd LARGEST PRODUCER IN THE COUNTRY



## *Inpasa – Dourados*

(in operation)

- ❖ Consumption: 1.8 million tons of corn/year;
- ❖ Production capacity:
  - 900 million liters of ethanol/year;
  - 460 million tons DDGS;
  - 44 thousand tons of corn oil;
  - 440 thousand MW of electricity/year.



## *Neomille S/A – Maracaju*

(under construction)

- ❖ Consumption: 1.2 million tons of corn/year;
- ❖ Production capacity:
  - 537 million liters of ethanol/year;
  - 1,086 ton DDGS and corn oil/day;
  - 44 MW of electricity/day.



# SUGARCANE AREAS 2022/23 HARVEST

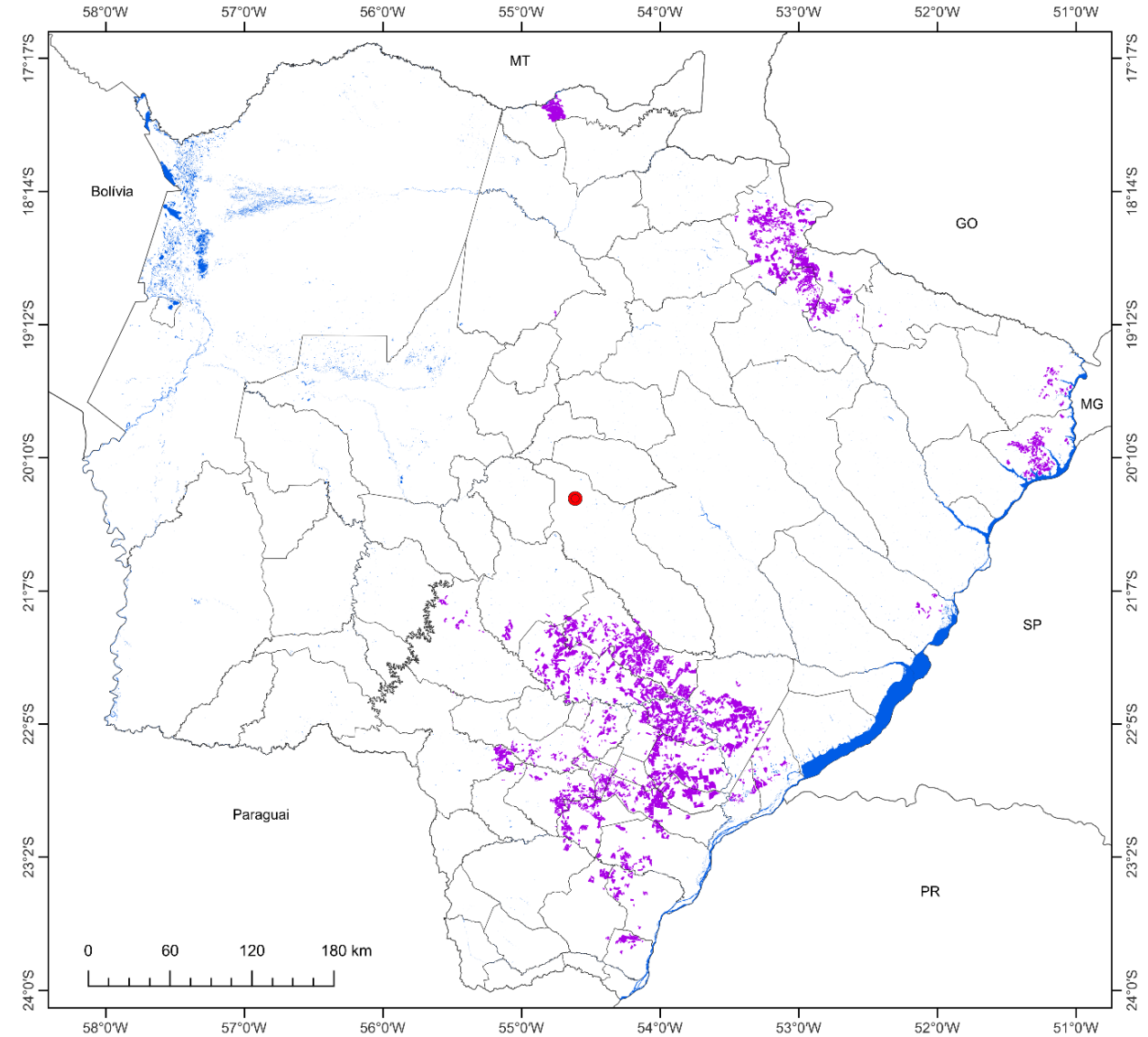


 Campo Grande

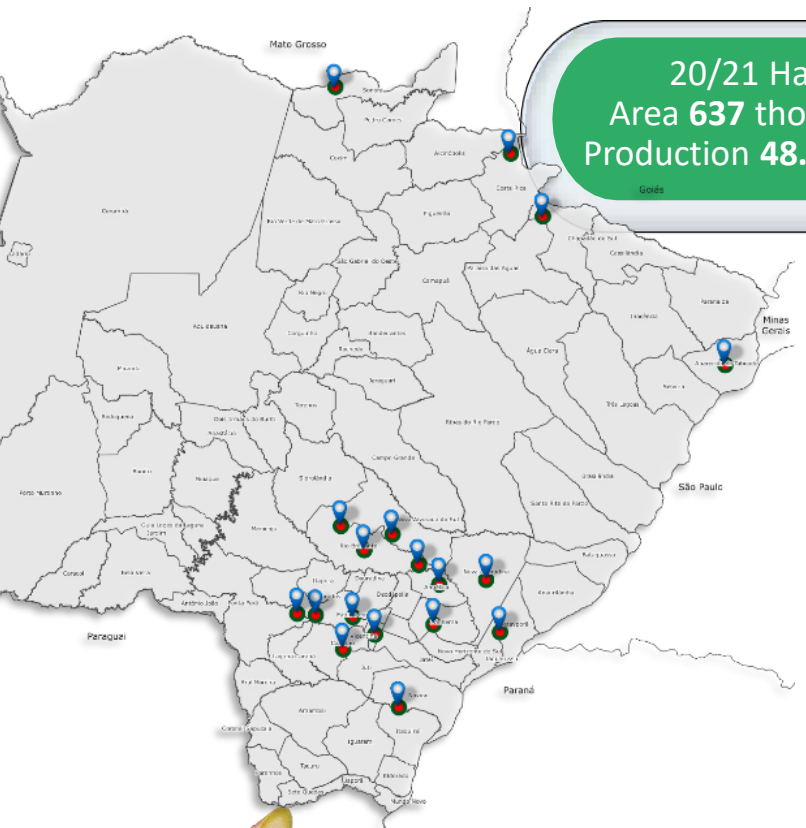
 Sugarcane

832,348 ha

Source: SIGA MS. Made by: DETEC/Famasul System.



# SUGAR ENERGY COMPLEX MS – 2022/2023



20/21 Harvest  
Area **637** thousand ha  
Production **48.9** million t.

Planted Area: 648,2 thousand ha  
Production: **41,34** million t.  
2020/21 CROP  
77,47% increase in production

Average Productivity  
**63,7** ton/ha  
2022 harvest

Crop 2022/2023  
**832** thousand ha

Export  
5th place in the national ranking



Sugar-Energy Complex  
1.16 million t.  
\$477 million in revenue



**23** countries  
Rep. of Georgia: **12.3%**  
Canada: **10.6%**  
Algeria: **10.4%**  
Netherlands: **8,01%**  
Others: **58.53%**

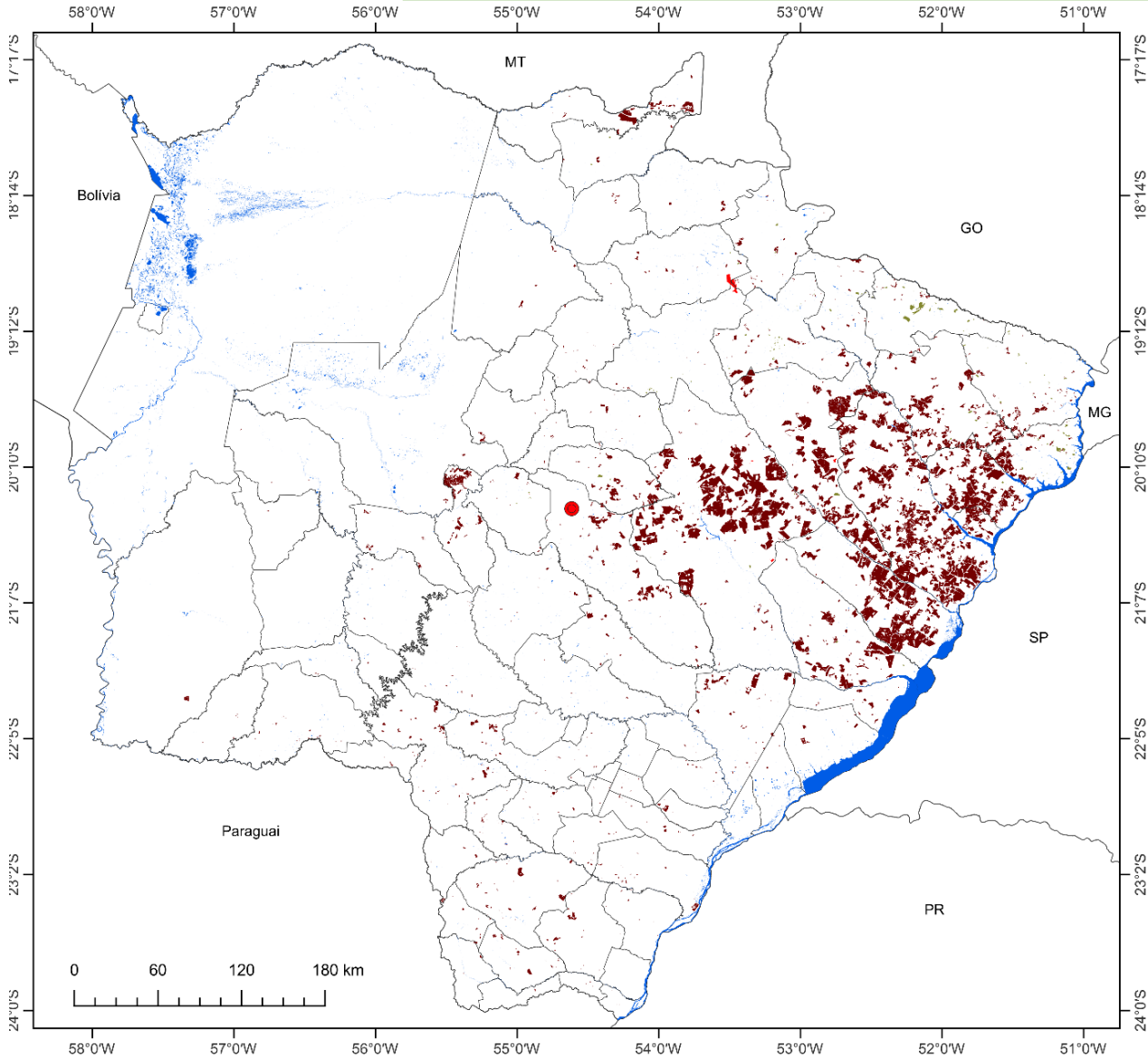
- **17** industries in operation
- **2** industries in project




Source: Conab; SIGA/MS. MAPA, 2023. Made by: DETEC/Sistema Famasul.



# SILVICULTURE AREAS DISTRIBUTION 2022/23



- ✓ Eucalyptus
- ✓ Pinus
- ✓ Rubber tree

 Silviculture  
1,305,913 ha

Cellulose  
2th biggest producer of Brazil

- 2 industries in operation
- 2 industries in project



Source: SIGA MS Made by: DETEC/Famasul System.

# FOREST PRODUCTS MS 2021/22



Planted Area:  
1,305,913 million ha  
HARVEST 2022/23

Pinus  
5,824 ha

Eucalyptus  
1,280,674 ha

Rubber tree  
19,415 ha

Export  
Forest Products - 2022  
4.49 millions t.  
\$1.5 billion in revenue



Cellulose 4.1 millions t  
99.16%

Paper 8.4 thousand t.  
0,55%

Wood 26.8 thousand t.  
0,29%



**36 countries**

China: 53.3%  
Italy: 9.7%  
Netherlands: 8.8%  
United States: 8.4%  
Others: 19.7%

**20 countries**

Peru: 22.11%  
France: 19.58%  
Bolivia: 17.98%  
Italy: 7.82%  
Others: 32.52%

**18 countries**

United States: 47.1%  
Portugal: 24%  
Australia: 19%  
South Korea: 3.8%  
Others: 6.1%



Source: SIGA/MS, MAPA, 2023. Made by: DETEC/Sistema Famasul.

# MS COTTON AREAS DISTRIBUTION - WINTER CROP HARVEST 2021/2022



**Cotton**

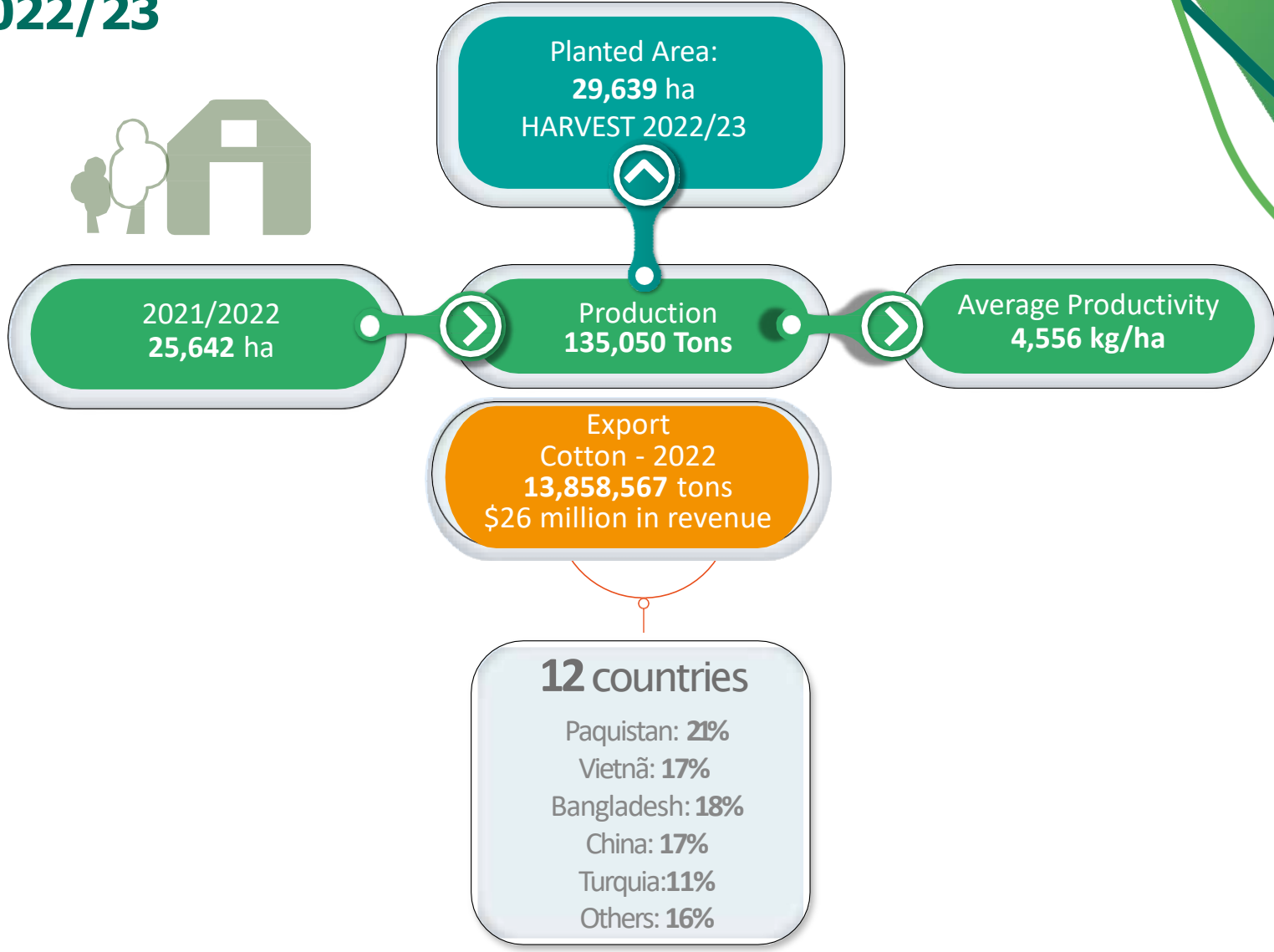
29,639 ha

● Campo Grande



Source: SIGA MS, Ampasul 2023; IBGE, 2023. Made by: DETEC/Famasul System.

# Cotton MS 2022/23

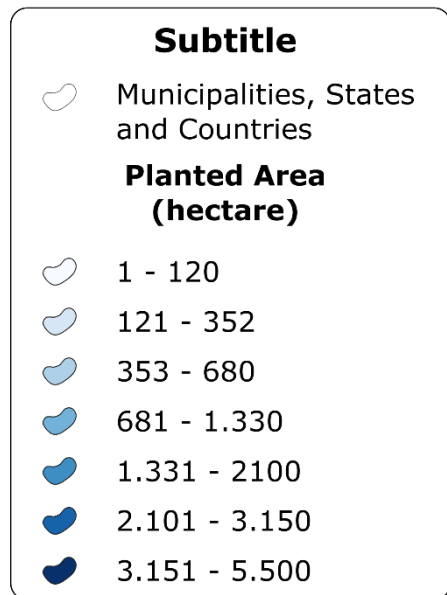


Source: Ampasul 2023; IBGE, 2023; MAPA, 2023. Made by: DETEC/Sistema Famasul.

# CASSAVA AREAS 2022/23 HARVEST

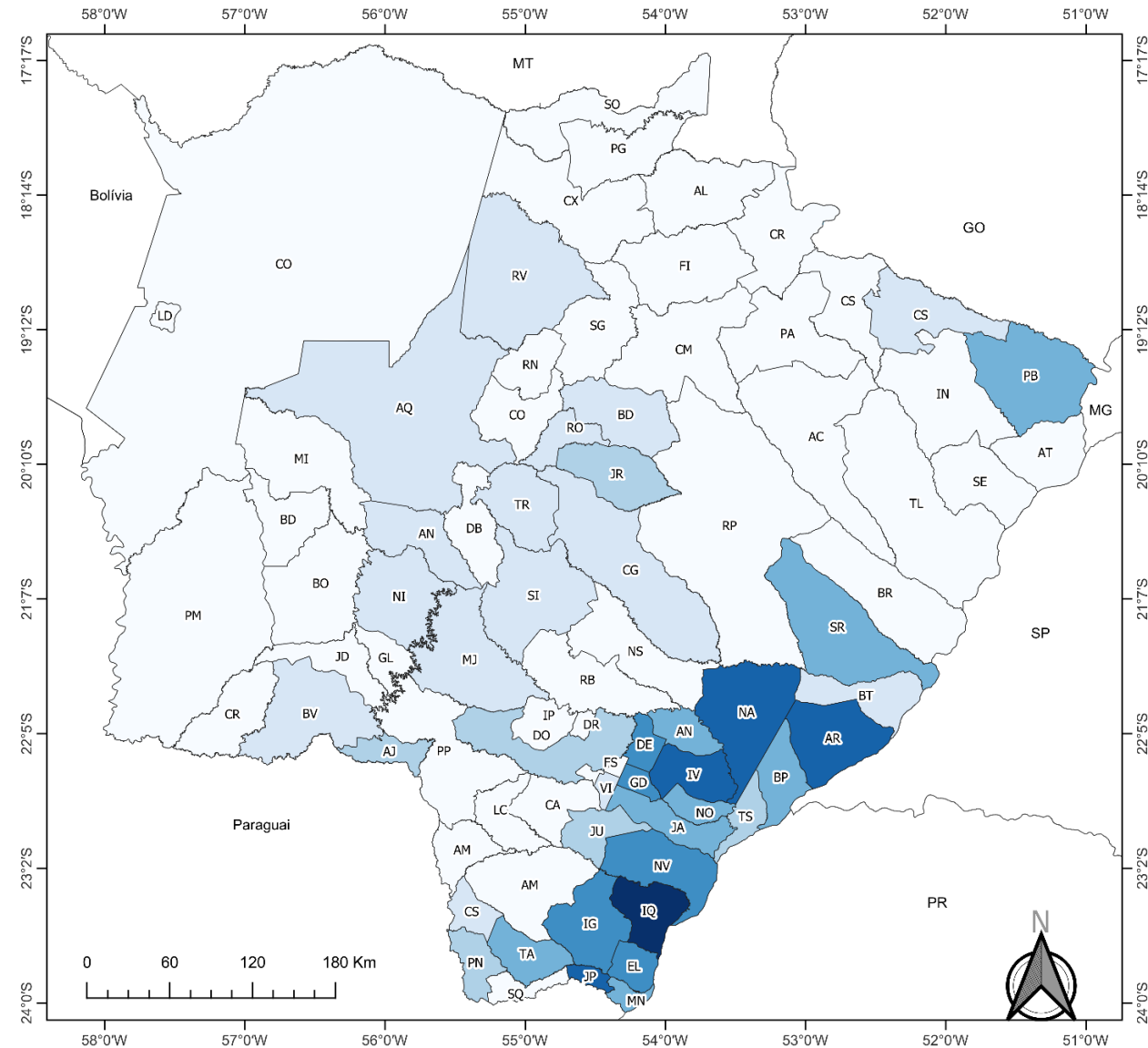
## CASSAVA

51,124 ha



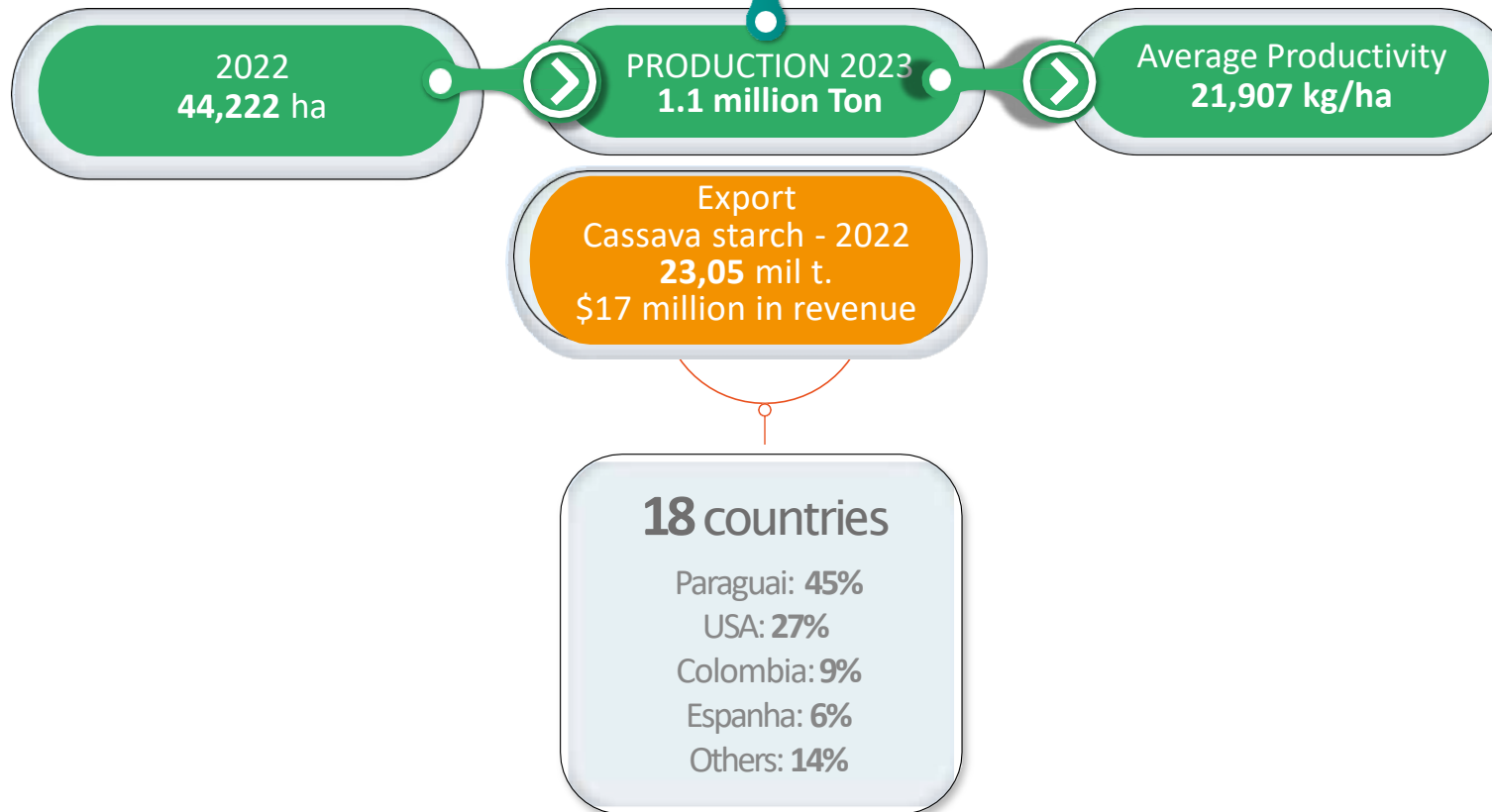
**TECHNICAL INFORMATION**

Data: PAM-IBGE (2022);  
 Elaboration: DETEC/SISTEMA FAMASUL;  
 Datum SIRGAS 2000;  
 September/2023.



Sources: IBGE (LSPA) 2023. Made by: DETEC/Sistema Famasul

# CASSAVA MS 2022/23



Sources: IBGE (LSPA) 2023; MAPA, 2023. Made by: DETEC/Sistema Famasul

---

# LIVESTOCK PRODUCTION IN MATO GROSSO DO SUL

---



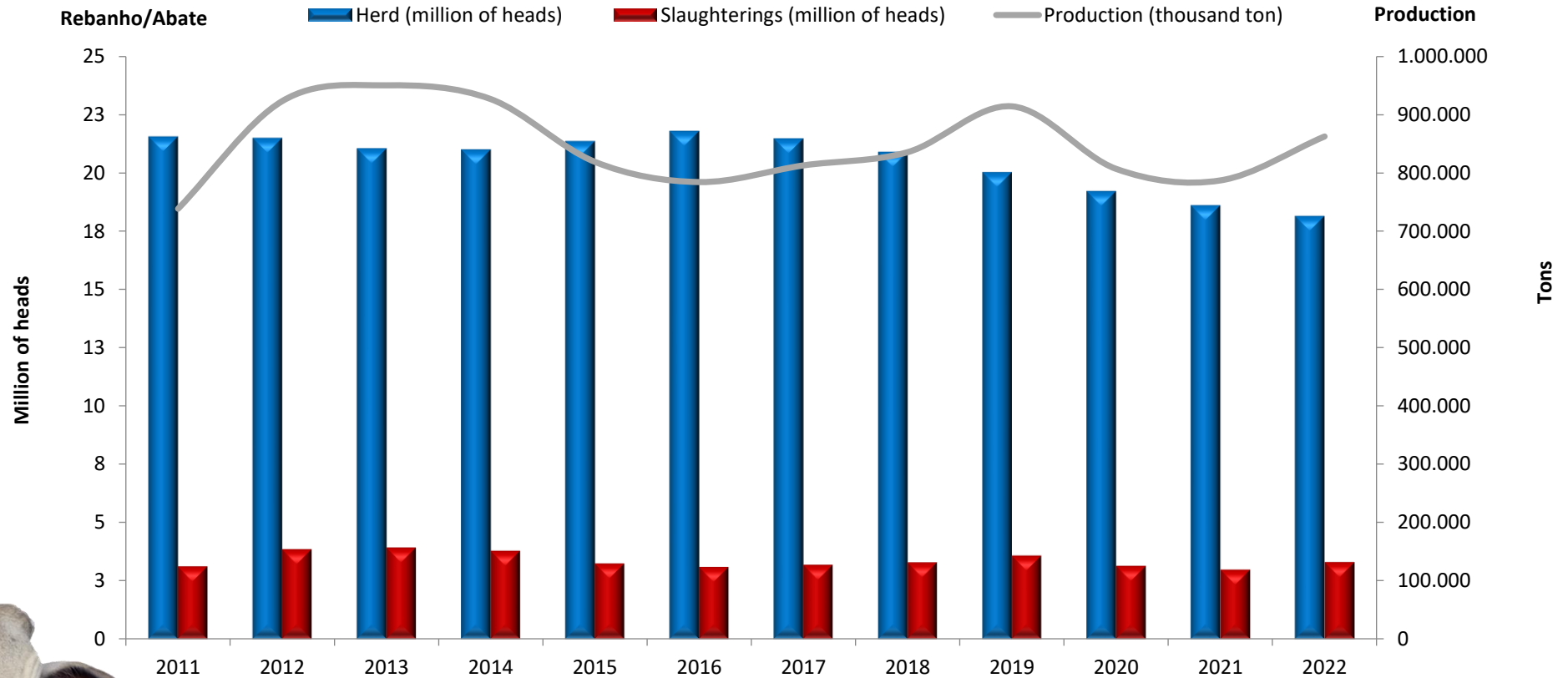
# BEEF CATTLE IN MS

Ten years (2012/2022):

↓ 15.80% Herd

↑ 6.06% Slaughterings

↑ 16.79% Production



Source: IBGE; MAPA/SFA; IAGRO, 2022. Made by: DETEC/Famasul System.



# BEEF CATTLE IN MS MS - 2022



Pasture: **18.09** million ha  
Production: **862.6** thousand tons  
Occupancy rate: **0.87** cab/ha  
Capacity: **1.05** AU/ha

Average carcass weight  
**263kg**  
Average Carcass Yield  
**50% - 52%**

Flock  
**15.6** million of heads

Confinements  
**498.3** Thousand Heads

Export  
**217.3** thousand t.  
**25.19%**  
**\$1.13** billion



Fresh beef **92.59%**  
**201.2** thousand t.

Industrialized  
**0.41%**  
**894** t.

Offal and others  
**7%**  
**15.2** thousand t.

**65** countries  
China: **30.58%**  
USA: **14.23%**  
Chile: **13.99%**  
Others: **41.19%**



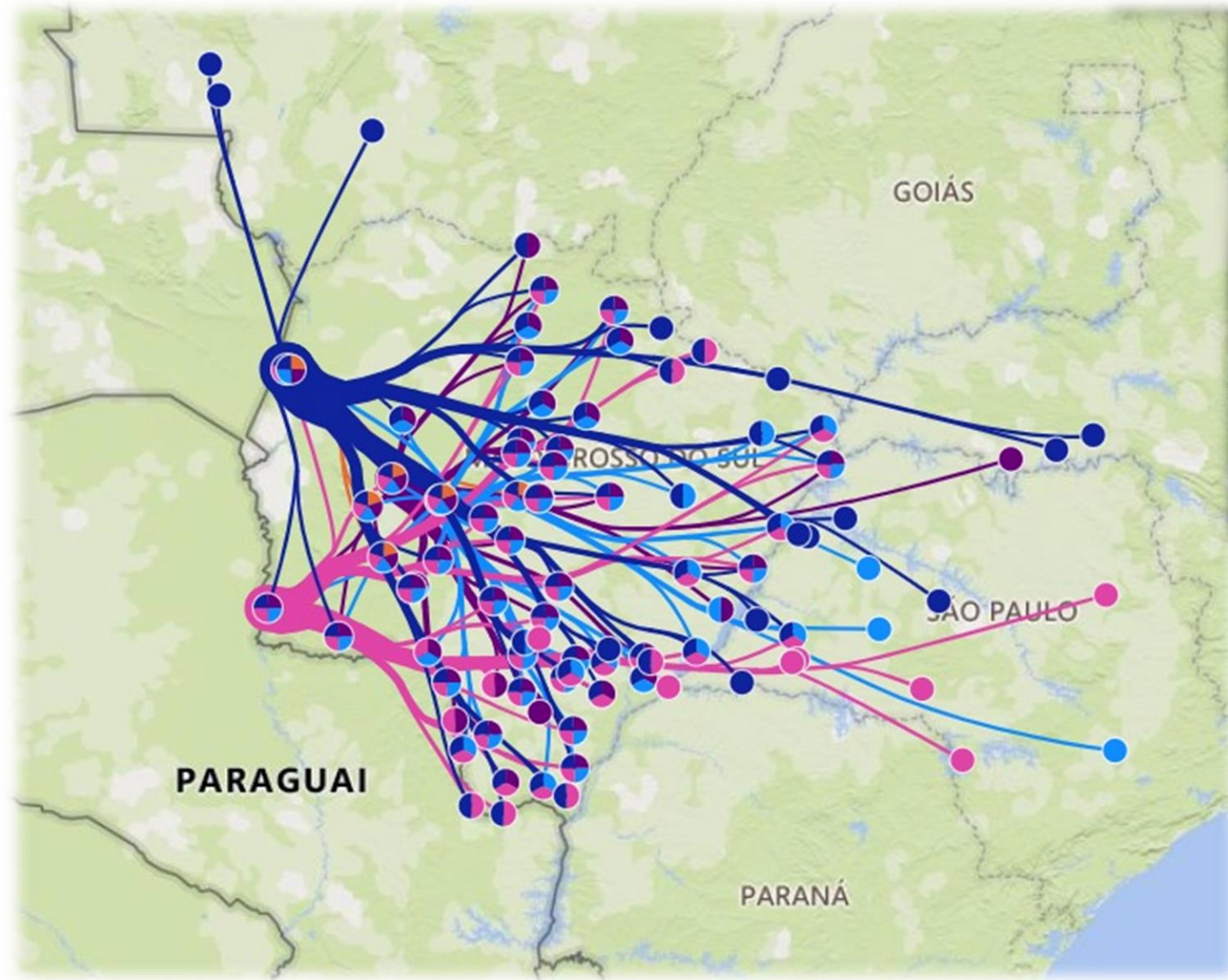
**10** countries  
Angola: **41.54%**  
Chile: **33.72%**  
Hong Kong: **16.81%**  
Others: **7.92%**

**39** countries  
Hong Kong: **43.30%**  
Costa do Marfim: **11.71%**  
Egipty: **6.78%**  
Others: **38.21%**



Source: SECEX, IAGRO, IBGE, 2023. Made by: DETEC/Sistema Famasul.

# ECONOMIC IMPORTANCE OF THE PANTANAL – CALF PRODUCTION



800 thousand calves  
produced per year

15% of MS production

Source: IAGRO

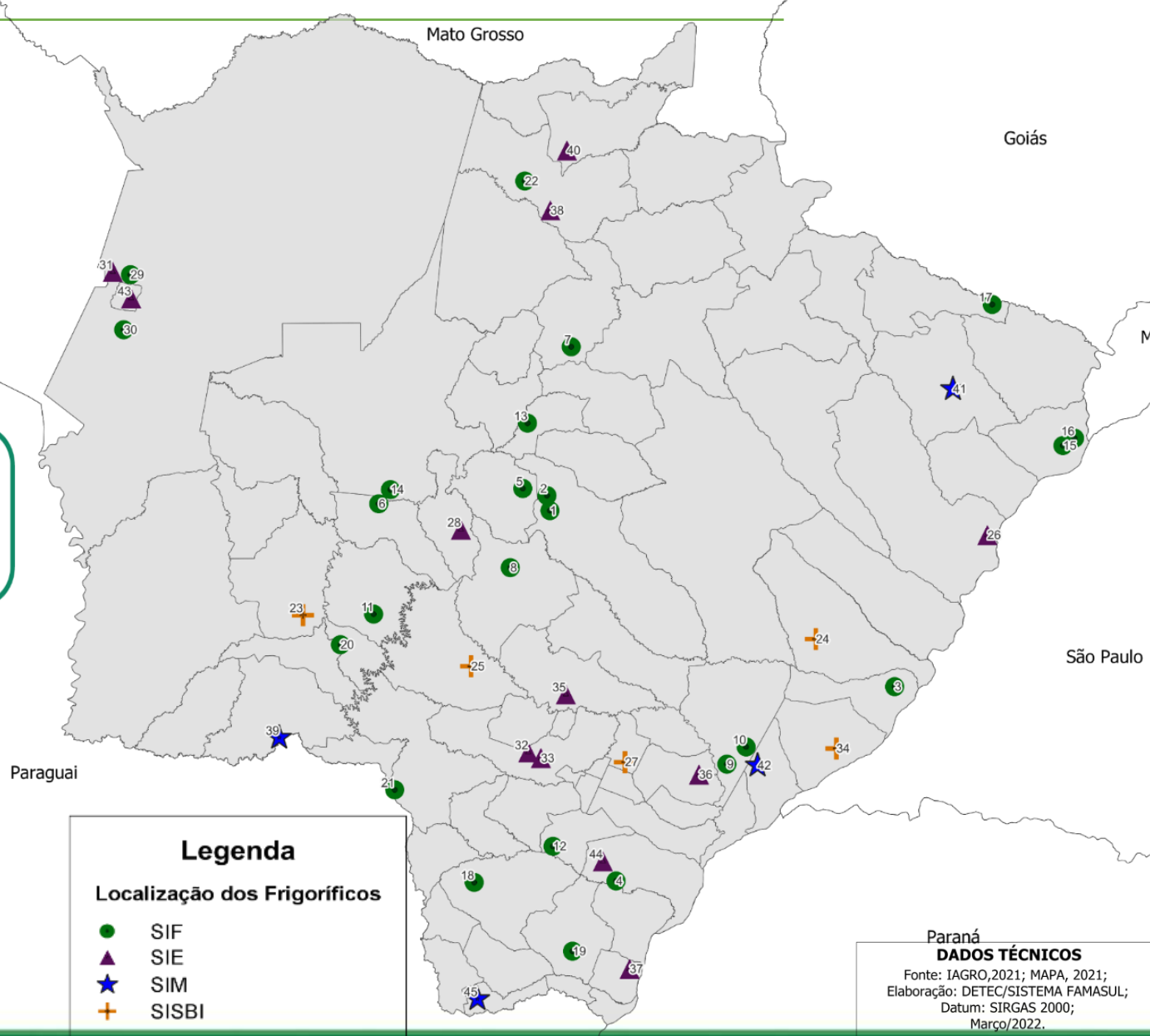
# BEEF SLAUGHTER HOUSES IN MS

**52**  
Active Industries

**August:**  
SIF  
11.555 animals/day

**August:**  
SIE/SIM/SISBI  
1.840 animals/day

**Slaughter carried out (2023):**  
Daily average of 10,415 animals



Paraná  
**DADOS TÉCNICOS**  
Fonte: IAGRO, 2021; MAPA, 2021;  
Elaboração: DETEC/SISTEMA FAMASUL;  
Datum: SIRGAS 2000;  
Março/2022.



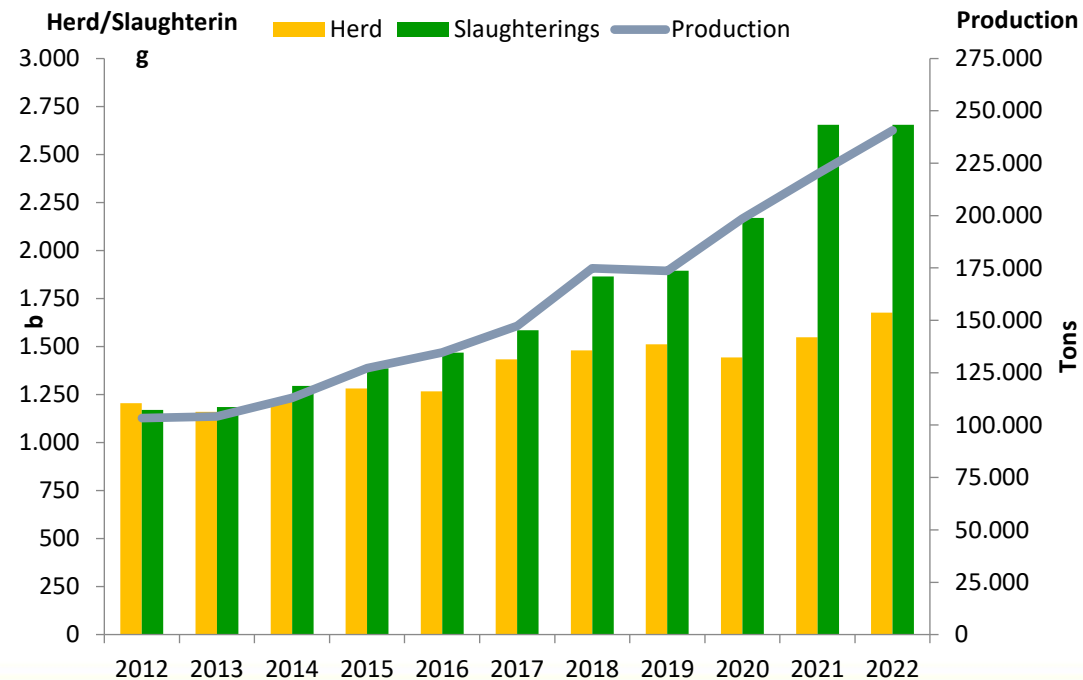
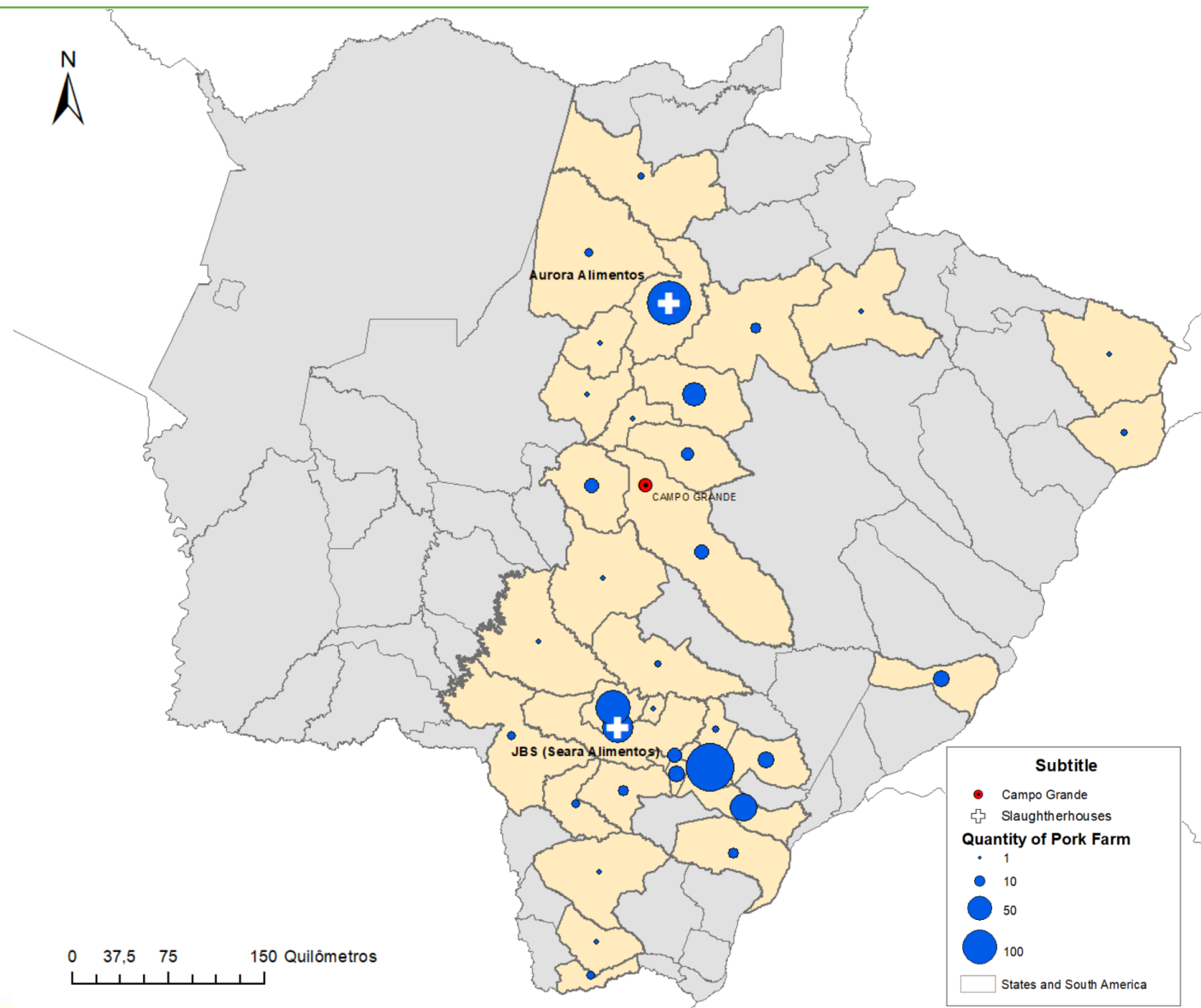
# PORK SLAUGHTERHOUSES IN MS

Ten years (2012/2022):

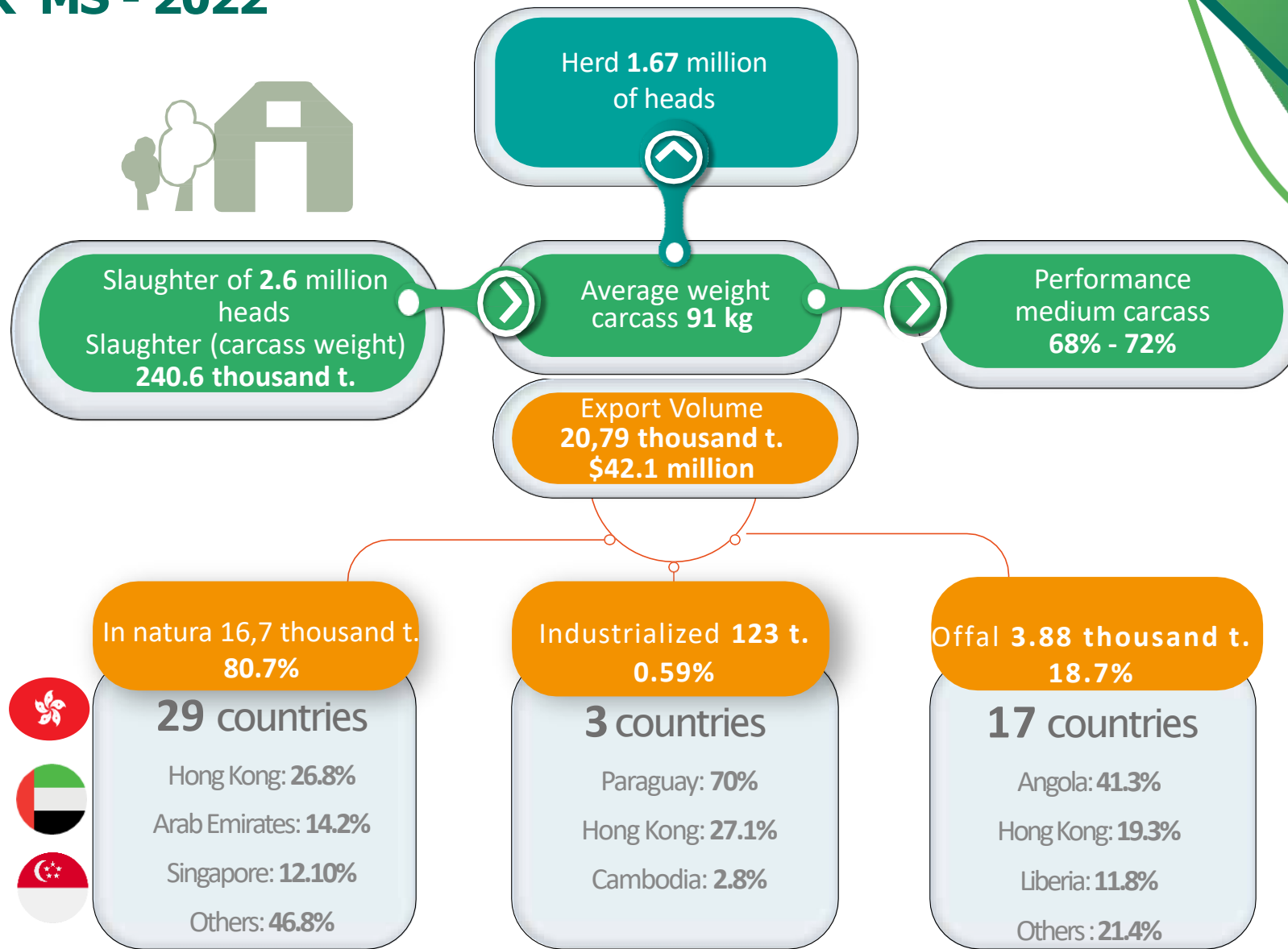
↑ 39.12% Herd

↑ 126.81% Slaughtering

↑ 132.89% Production



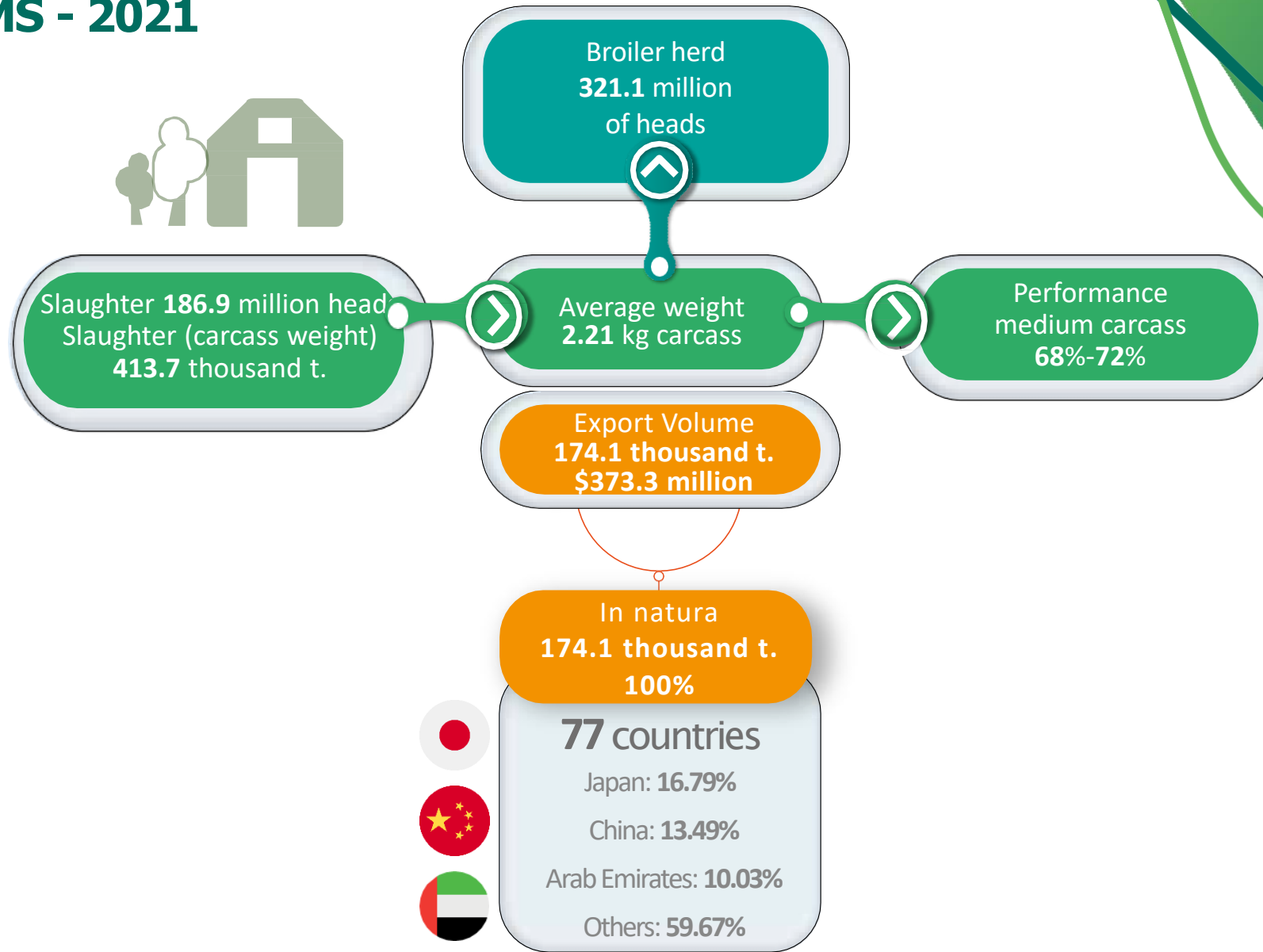
# PORK SECTOR MS - 2022



Source: IAGRO, IBGE, SECEX, 2023. Made by: DETEC/Sistema Famasul.



# POULTRY MS - 2021



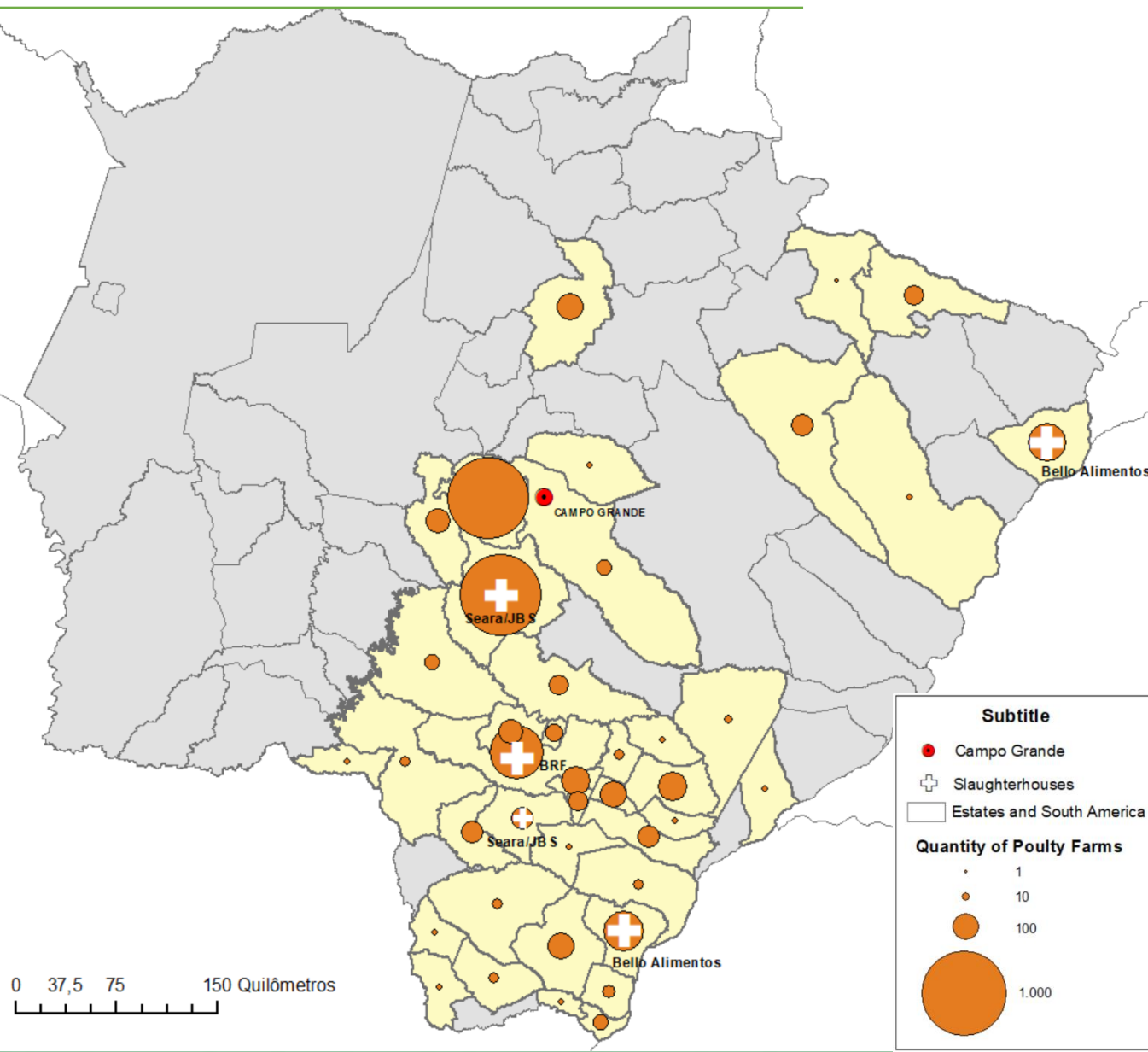
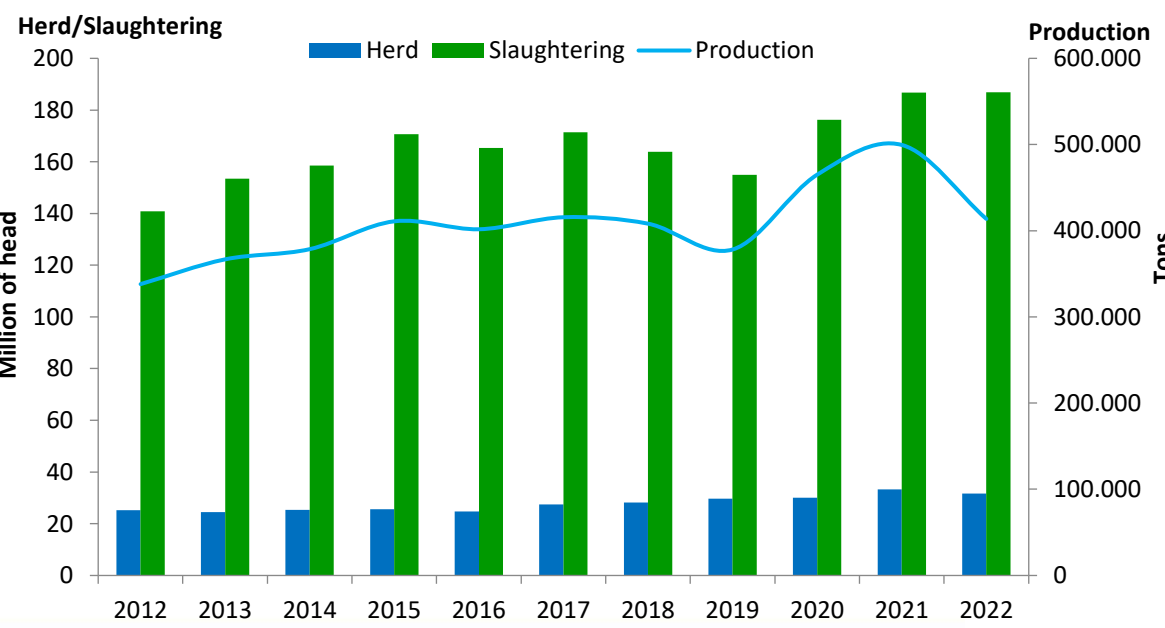
Source: IAGRO; IBGE; SECEX, 2023. Made by: DETEC/Sistema Famasul.



# POULTRY SLAUGHTER HOUSES IN MS

ten years (2012/2022):

- ↑ 25.36% Herd
- ↑ 32.71% Slaughtering
- ↑ 22.40% Production







# AQUACULTURE IN MATO GROSSO DO SUL



# 1,07 BI

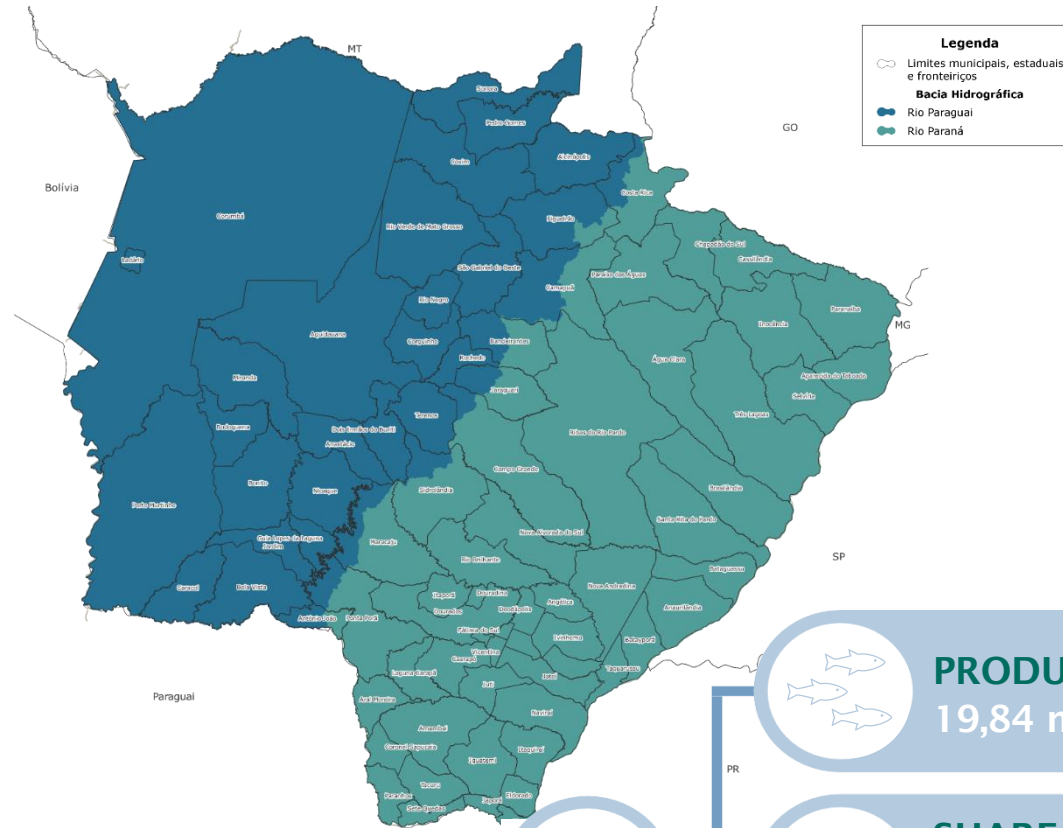
FISH

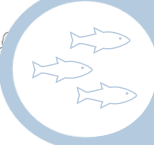




Exotic Species like :

# Tilapia

Cultive is only permitted at the

# Parana Basin



-  **PRODUCTION**  
19,84 mil tons in 2021
-  **SHARE OF EXPORTS**  
25,08% of the brazilian revenue  
2º place in the national ranking
-  **MAJORS DESTINATIONS**
  -  USA  
93,18%
  -  Canada  
6,82%

Fonte: Ministério da Economia/SECEX, 2022, PAM/IBGE, 2021.





# FAMASUL

Federation of Agriculture and Livestock  
Mato Grosso do Sul

*Creating Opportunities. Building Solutions.*

